



The following pages are an extract from our current “Plant & Equipment” catalogue for office and warehouse supplies. The catalogue has around 600 pages and contains more than 10,000 products in the following areas:

- |   |   |
|---|---|
| <b>1 Plant &amp; equipment</b>              | <b>2 Warehouse equipment</b>            |
| <b>3 Packaging/ Dispatch</b>                | <b>4 Transport/ Conveying Equipment</b> |
| <b>5 Ladders/ Scaffolding</b>               | <b>6 Outdoor Facilities</b>             |
| <b>7 Environmental Protection/ Disposal</b> | <b>8 Office Equipment</b>               |

See for yourself how large product selection is! Professional handling of this market segment is a result of the consistent continued development and supplementing of our range of products and services.

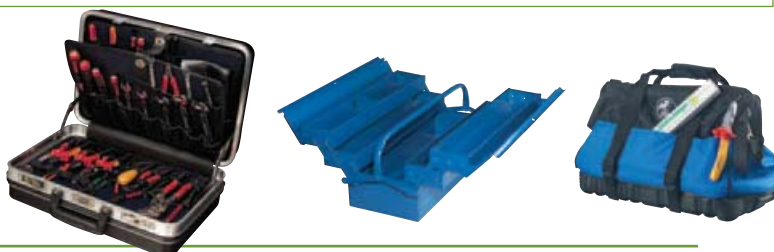
You can order our “Plant & Equipment” catalogue free of charge on our homepage. Or contact the specialist consultant responsible for your account. They will be able to help you with any questions you may have.

### Tool cases

### Tool bags

### Tool boxes

Page 1144 - 1158



### Locks

### Square link security chains

### Key fobs

Page 1159 - 1161



### Tool trolleys

### Storage bins

### ALUMINIUM chests

Page 1162 - 1169



### Wing leaf door cupboards

### Drawer cabinets

### Special keys

Page 1171 - 1177



### Ladders

Page 1178 - 1179

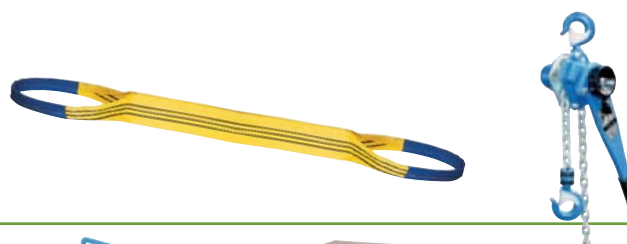


### Chain hoists

### Slings

### Roundslings

Page 1180 - 1183



### Pallet trucks

### Platform trucks

### Wheelbarrows

### Workbenches

Page 1185 - 1189





## Extract from the "Plant &amp; Equipment" catalogue

**75 350 Paratool tool case**

- Ergonomic working at average level of 600 mm
- Small parts store in the bottom tray
- Inner moulded tray cover as standing area for tools
- Integrated chassis with large castors
- Telescopic handle
- Additional load can be placed on the base
- Dust-tight and splash proof
- Case moulded trays made of highly impact absorbing Xenoy, black
- robust anti-tilt cylinder locks

**Tools not included**

**Type:** ...010: 2 tool panels, with 2 CP-7 tool holder (Ø 11 mm), 1 CP-7 tool holder (Ø 15 mm), 1 CP-7 tool holder (Ø 26 mm), 1 inner tray with cover panel height 22 - 54 mm, 4 compartments, 1 document compartment in lid 1 document holder

**Type:** ...012: 1 tool panel with 33 pockets, 1 clipped compartment 400 mm, 1 tool panel with 17 pockets, 1 pocket for small parts, 1 compartment with fasteners 400 mm, 1 inner tray with cover panel height 22 - 54 mm, 4 partitions, document holder

| Internal size<br>mm | 75 350... |  | Weight<br>g | Load capacity<br>kg |
|---------------------|-----------|--|-------------|---------------------|
| 465 x 210 x 355     | 010       |  | 8900        | 40                  |
| 465 x 210 x 355     | 012       |  | 8300        | 40                  |

**PARAT**

enables ergonomic working



75 350 010



75 350 012

**75 351 Chicago Case tool case**

extremely stable, virtually indestructible and suitable as flight case, tool case with wheel system

- Moulded shell made of HDPE polyethylene, impact resistant and with clear advantages compared to ABS,
- Aluminium frame hardened and extremely torsion resistant.
- Lockable quality locks,
- Combination lock and additional device for padlock,
- Handle automatically folds away,
- Inline skater wheels for extreme weights

**Tools not included****Primat**

On wheels, virtually indestructible, made of HDPE!



75 351 ...

| Internal size<br>mm | 75 351... |  | Weight<br>g |
|---------------------|-----------|--|-------------|
| 460 x 310 x 370     | 020       |  | 7000        |
| 530 x 190 x 310     | 022       |  | 6000        |

**75 352 Cargo hard shell tool case**

- Case shells made of X-ABS plastic
- extremely impact resistant, suitable as flight case, tool panels made of Con Pearl®, black
- with ergonomic handle with padded grip recessed grips
- robust anti-tilt cylinder lockers, inner double aluminium frame
- Indent hinges with locking element

**Tools not included****Type**

with 1 tool panel which can be equipped from both sides, 1 tool panel can be equipped on one side, and one cover panel, with 3 CP-7 tool holder strips in total, bottom moulded shell can be partitioned as required, 88 mm high, document compartment in lid

extremely impact resistant

| Internal size<br>mm | 75 352... |  | Weight<br>g | Load capacity<br>kg |
|---------------------|-----------|--|-------------|---------------------|
| 470 x 190 x 355*    | 024       |  | 5000        | 40                  |

\*= This case has an extremely high bottom shell of 88 mm

**PARAT**

75 352 ...





### 75 353 ABS hard shell tool case

#### Features:

- separate document compartment in the lid
- removable, 2-sided tool panel with 17 pockets on the front and 12 pockets on the rear
- ABS insert tray with dividers
- Cover panel with 6 large pockets and 2 elasticated loops
- Tool panels made of scratchproof plastic material
- Tool compartments made of extremely tearproof mesh
- Ergonomic handle
- 2 lockable, screwed on locks
- Additional combination lock
- Stable lid holder
- Hinge cover
- Padded, removable shoulder strap (adjustable)

#### Tools not included



75 353 500

| Internal size<br>mm | 75 353... |  | Weight<br>g |
|---------------------|-----------|--|-------------|
| 440 x 180 x 350     | 500       |  | 3900        |

The complete range is given in the  
“Plant & Equipment”  
catalogue”







## Extract from the "Plant & Equipment" catalogue

### 75 355 Hard shell tool case

Case shells made of ABS plastic, ergonomic handle, quality locks with metal cylinders, hardened aluminium frame, metal hinges, studs on bottom, black  
Tools not included

#### Type:

removable tool panel can be equipped on both sides with 26 pockets and integrated document compartment, bottom shell with 1 lengthwise partition and 6 transverse partitions for individual organisation and cover panel with 6 large pockets

| Internal size<br>mm | 75 355... |  | Weight<br>g |
|---------------------|-----------|--|-------------|
| 460 x 160 x 310     | 001       |  | 4000        |



75 355 001



### 75 357 Hard shell tool case

Case shells made of ABS plastic, ergonomic handle, quality locks with metal cylinders, hardened aluminium frame, metal hinges, studs on bottom, black  
Tools not included

#### Type:

Separate document compartment in the lid, removable tool panel which can be equipped on both sides with 13 pockets and 26 elasticated tool holding loops, bottom shell with 1 lengthwise divider and 6 transverse dividers for individual partitioning and cover panel with 13 pockets and 8 elasticated loop toolholders

| Internal size<br>mm | 75 357... |  | Weight<br>g |
|---------------------|-----------|--|-------------|
| 460 x 180 x 310     | 001       |  | 4500        |



75 357 001



### 75 359 Hard shell tool case

Case shells made of ABS plastic, ergonomic handle, quality locks with metal cylinders, hardened aluminium frame, metal hinges, studs on bottom, black  
Tools not included

#### Type:

Separate document compartment in the lid, removable tool panel which can be equipped on both sides with 13 pockets and 26 elasticated tool holding loops, additional tool panel which can be equipped on one side with 11 pockets, press-stud pocket and 11 elasticated loop toolholders, bottom shell with 1 lengthwise divider and 6 transverse dividers for individual partitioning and cover panel with 13 pockets and 8 elasticated loop toolholders

| Internal size<br>mm | 75 359... |  | Weight<br>g |
|---------------------|-----------|--|-------------|
| 460 x 180 x 310     | 001       |  | 5000        |



75 359 001



### 75 361 Hard shell tool case

Case shells made of ABS plastic, ergonomic handle, quality locks with metal cylinders, hardened aluminium frame, metal hinges, studs on bottom, timeless design, absolute reliability, for daily use, black  
Tools not included

#### Type:

Separate document compartment in the lid, removable tool panel which can be equipped on both sides with 13 pockets and 26 elasticated tool holding loops, bottom shell with 1 lengthwise divider and 6 transverse dividers for individual partitioning and cover panel with 13 pockets and 8 elasticated loop toolholders

| Internal size<br>mm | 75 361... |  | Weight<br>g |
|---------------------|-----------|--|-------------|
| 470 x 180 x 360     | 012       |  | 5600        |



75 361 012





### 75 363 Silver hard shell tool case

ABS case shells, tool panels made of Con Pearl®, black, handle, metal hinges, lid holder, anti-tilt locks.

1 tool panel with 25 pockets, 1 compartment with fasteners 400 mm, 1 tool panel with 15 pockets, 1 compartment with fasteners 400 mm, 1 bottom shell with cover panel height 58 mm, can be freely partitioned as required,

**Tools not included**

**PARAT**



75 363 001

| Internal size<br>mm | 75 363... |  | Weight<br>g | Load capacity<br>kg |
|---------------------|-----------|--|-------------|---------------------|
| 465 x 170 x 310     | 001       |  | 3700        | 20                  |

### 75 365 Silver hard shell tool case

ABS case shells, tool panels made of Con Pearl®, black, handle, metal hinges, lid holder, anti-tilt locks.

1 tool panel with 25 pockets, 1 compartment 400 mm, 1 tool panel with 10 pockets, 1 compartment with fasteners 400 mm, 1 cover panel with 15 pockets, 1 compartment with fasteners 400 mm, 1 bottom shell with cover panel height 58 mm, can be freely partitioned as required,

**Tools not included**

**PARAT**



75 365 010

| Internal size<br>mm | 75 365... |  | Weight<br>g | Load capacity<br>kg |
|---------------------|-----------|--|-------------|---------------------|
| 465 x 170 x 310     | 010       |  | 4200        | 20                  |

### 75 367 Classic hard shell tool case

Case shells made of X-ABS plastic, extremely tough, suitable as flight case, tool panels made of Con Pearl®, black, double aluminium frame; stable handle with padded grip recesses; anti-tilt cylinder locks; indent hinges, studs on bottom.

1 tool panel with 25 pockets and 1 compartment with fasteners 400 mm, 1 cover panel with 15 pockets and 1 compartment with fasteners 400 mm, 1 bottom shell with cover panel, height 88 mm, can be freely partitioned as required, 1 document compartment in lid

**Tools not included**

**PARAT**



75 367 010

| Internal size<br>mm | 75 367... |  | Weight<br>g | Load capacity<br>kg |
|---------------------|-----------|--|-------------|---------------------|
| 470 x 180 x 360     | 010       |  | 5100        | 30                  |

### 75 369 Classic hard shell tool case

Case shells made of X-ABS plastic, extremely tough, suitable as flight case, tool panels made of Con Pearl®, black, double aluminium frame; stable handle with padded grip recesses; anti-tilt cylinder locks; indent hinges, studs on bottom.

1 tool panel with 25 pockets and 1 compartment with fasteners 400 mm, 1 tool panel with 10 pockets, 1 cover panel with 15 pockets and 1 compartment with fasteners 400 mm, 1 bottom shell with cover panel, height 58 mm, can be freely partitioned as required, 1 document compartment in lid

**Tools not included**

**PARAT**



75 369 010

| Internal size<br>mm | 75 369... |  | Weight<br>g | Load capacity<br>kg |
|---------------------|-----------|--|-------------|---------------------|
| 460 x 165 x 310     | 010       |  | 4700        | 30                  |



## Extract from the "Plant &amp; Equipment" catalogue

**75 371 Wheeled case**

Suitable as flight case and unbreakable hard shell case made of HDPE plastic with integrated wheel system

**Tools not included**

**Type:**

Unbreakable case shell (suitable as flight case), integrated wheel system with telescopic trolley handle, corners with additionally strengthened with aluminium, extremely stable frame, 2 lockable screwed on locks, separate document compartment in the lid, 2-sided tool panel with 13 pockets and 26 rubber toolholder loops, additional tool panel which can be equipped on one side with 11 pockets, press-stud pocket and 11 elasticated loop toolholders, ABS insert shell with partitions, cover panel with 13 pockets and 8 rubber loop toolholders

| Internal size<br>mm | 75 371... |  | Weight<br>g |
|---------------------|-----------|--|-------------|
| 470 x 220 x 360     | 001       |  | 7300        |

Telescopic handle  
on wheels



75 371 001

**75 373 Case with drawers**

Cowhide leather combined with ABS plastic, interior completely strengthened, 2 extra large strap locks,

**Tools not included**

**Type:**

Professional quality, 4 drawers, compartment for small parts, removable portable tray insert, fold open front, partly fold open rear, fixed toolholder loops on rear and middle partition, tools not included

| Internal size<br>mm | 75 373... |  | Weight<br>g |
|---------------------|-----------|--|-------------|
| 410 x 190 x 280     | 002       |  | 4500        |



75 373 002

**75 375 Tool bag**

Cowhide leather

**Tools not included**

**Type:**

removable middle partition, front and back partly fold open, fixed toolholder loops on front and rear panel and on both sides of the middle partition, all-round black coated aluminium edges, interior completely strengthened, all-round strap, sheet steel base tray, studs on bottom, two extra large strap locks

| Innenmaß<br>mm  | 75 375... |  | Gewicht<br>g |
|-----------------|-----------|--|--------------|
| 450 x 190 x 340 | 001       |  | 5000         |



75 375 001

**75 377 Tool bag**

Cowhide leather combined with ABS plastic

**Tools not included**

**Type:**

partly opening out front panel with separators, Fixed loops attached all round, 2 extra large strap locks, studs on bottom,

| Internal size<br>mm | 75 377... |  | Weight<br>g |
|---------------------|-----------|--|-------------|
| 400 x 180 x 310     | 002       |  | 2400        |

improved design



75 377 002







### 75 379 Classic wheeled case

Case shells made of X-ABS plastic, extremely tough, suitable as flight case, tool panels made of Con Pearl®, black, double aluminium frame; anti-tilt cylinder locks; indent hinges, studs on bottom. 1 tool panel with 25 pockets and 1 compartment with fasteners 400 mm, 1 tool panel with 10 pockets, 1 cover panel with 15 pockets and 1 compartment with fasteners 400 mm, 1 bottom shell with cover panel, height 88 mm, can be freely partitioned as required, 1 document compartment in lid

Tools not included

PARAT S



75 379 001

75 379 001

| Internal size<br>mm | 75 379... |  | Weight<br>g | Load capacity<br>kg |
|---------------------|-----------|--|-------------|---------------------|
| 470 x 210 x 360     | 001       |  | 6800        | 40                  |

### 75 381 Top-Line tool bag

with drawers, extra thick cowhide leather, black, front panel opens out, 4 piece, drawer insert, with small parts magazine store in the bottom drawer which can be freely subdivided as required, portable tray insert, middle partition with flexible CP-7 tool holder for tools up to 15 mm diameter, rear panel partly opens out, with flexible CP-7 tool holder for tools up to 26 mm diameter, handle, latch locks, body of bag reinforced with aluminium angle profiles

Tools not included

...001 Compact synthetic leather with key locks

...003 made of extra thick cowhide leather, with latch locks made of compact synthetic leather

PARAT S

with practical drawers



75 381...

| Internal size<br>mm | 75 381... |  | Weight<br>g |
|---------------------|-----------|--|-------------|
| 410 x 190 x 280     | 001       |  | 4000        |
| 410 x 190 x 280     | 003       |  | 4600        |

### 75 383 Top-Line tool bag

extra thick cowhide leather, black, front panel partly opens out with flexible CP-7 toolholder for tools up to 15 mm diameter, CP-7 toolholders Ø 11 mm, CP-7 toolholders Ø 15 mm, rear panel partly opens out with flexible CP-7 toolholders for tools up to 26 mm diameter, front pocket, handle with padded grip recesses, robust latch locks, body of bag strengthened with aluminium angle profiles. Bag without wheels, available with wheels on request. Tools not included

PARAT S



75 383 001

| Internal size<br>mm | 75 383... |  | Weight<br>g |
|---------------------|-----------|--|-------------|
| 450 x 190 x 340     | 001       |  | 4700        |

### 75 385 Top-Line tool bag

made of extra thick cowhide leather, ABS plastic, black, latch locks, handle, handle hole, studs on bottom. Front panel partly opens out with 8 pockets; middle partition with 1 CP-7 toolholder Ø 11 mm; 1 CP-7 toolholder, Ø 26 mm. Tools not included

PARAT S



75 385 011

| Internal size<br>mm | 75 385... |  | Weight<br>g |
|---------------------|-----------|--|-------------|
| 420 x 185 x 315     | 011       |  | 2900        |





## Extract from the "Plant &amp; Equipment" catalogue

**75 387 Tool bag**

Cowhide leather  
Tools not included

**Type:**

Removable middle partition, 2 zips  
front panel opens out, 27 adjustable tool holders, 4 pockets,  
1 pocket with flap, 2 document compartments, interior completely  
reinforced, zinc plated sheet steel base tray, 2 key locks, studs on  
bottom, rings for attaching strap

| Internal size<br>mm | 75 387... |  | Weight<br>g |
|---------------------|-----------|--|-------------|
| 400 x 145 x 280     | 001       |  | 3300        |



75 387 001

**75 389 Tool bag**

Cowhide leather  
Tools not included

**Type:**

front panel opens out, aluminium edge protection profiles,  
adjustable toolholders on the front and rear panel, fixed toolholder  
loops in the side panels, interior completely reinforced, zinc plated  
sheet steel base tray, studs on bottom, rings for attaching strap

| Internal size<br>mm | 75 389... |  | Weight<br>g |
|---------------------|-----------|--|-------------|
| 450 x 150 x 320     | 001       |  | 3100        |



75 389 001

**75 391 Tool bag**

Cowhide leather  
Tools not included

**Type:**

front pocket, all-round aluminium edge protection, front panel  
folds open, adjustable toolholders, fixed toolholder loops on the  
side panels, interior completely reinforced, studs on bottom,  
rings for attaching strap, shoulder strap included

| Internal size<br>mm | 75 391... |  | Weight<br>g |
|---------------------|-----------|--|-------------|
| 420 x 150 x 250     | 001       |  | 2800        |



75 391 001

**75 393 Tool bag**

Cowhide leather  
Tools not included

**Type:**

adjustable toolholders, rings for attaching strap

| Internal size<br>mm | 75 393... |  | Weight<br>g |
|---------------------|-----------|--|-------------|
| 370 x 110 x 250     | 001       |  | 1500        |
| 410 x 160 x 300     | 002       |  | 200         |



75 393 ...

**75 395 Tool bag**

ABS plastic, combined with cowhide leather  
Tools not included

**Type:**

inside empty for individual use

| Internal size<br>mm | 75 395... |  | Weight<br>g |
|---------------------|-----------|--|-------------|
| 355 x 115 x 175     | 001       |  | 900         |



75 395 001







### 75 397 Top-Line tool bag

with middle divider panel, extra thick cowhide leather, black, front panel folds open, with 4 pockets, 1 pocket for small parts and compartment with fasteners, centre panel with flexible CP-7 toolholder for tools up to 11 and 15 mm diameter respectively on front and back, rear panel with flexible CP-7 toolholders for tools up to 26 mm diameter, handle with padded grip recesses, robust latch locks, studs on bottom, base made of sheet steel, zinc plated

**Tools not included**

**PARAT**



75 397 001

| Internal size<br>mm | 75 397... |  | Weight<br>g |
|---------------------|-----------|--|-------------|
| 415 x 165 x 275     | 001       |  | 3500        |

### 75 399 New Classic all-purpose bag

Front panel folds open, with 11 adjustable loops, rear panel with 8 stitched pockets, bottom tray, PARAT key locks, rings with caps for attaching strap

**Tools not included**

**PARAT**



75 399 001

| Internal size<br>mm | 75 399... |  | Weight<br>g |
|---------------------|-----------|--|-------------|
| 440 x 185 x 300     | 001       |  | 2900        |

### 75 401 New Classic all-purpose bag

Front panel partly opens out, with 11 adjustable loops, rear panel with 9 fixed loops, front pocket, ring with caps for attaching strap, PARAT key locks, side panels and bottom tray made of HDPE, grained, bag body reinforced with aluminium angle profiles

**Tools not included**

**PARAT**



75 401 001

| Internal size<br>mm | 75 401... |  | Weight<br>g |
|---------------------|-----------|--|-------------|
| 420 x 160 x 250     | 001       |  | 2600        |

### 75 403 Top-Line tool bag

extra thick cowhide leather, black, front panel with flexible CP-7 toolholder for tools up to 15 mm diameter, rear panel with flexible CP-7 toolholder for tools up to 26 mm diameter, front pocket, handle with padded grip recesses, robust latch locks, body of bag strengthened with aluminium angle profiles

**Tools not included**

**PARAT**



75 403 010

| Internal size<br>mm | 75 403... |  | Weight<br>g |
|---------------------|-----------|--|-------------|
| 430 x 190 x 250     | 010       |  | 2900        |

### 75 405 Classic all-purpose tool bag

ABS plastic, flap made of cowhide leather, black, without interior features, key locks, handle

**Tools not included**

**PARAT**



75 405 ...

| Internal size<br>mm | 75 405... |  | Weight<br>g |
|---------------------|-----------|--|-------------|
| 360 x 110 x 170     | 001       |  | 600         |
| 390 x 170 x 230     | 003       |  | 1400        |





## Extract from the "Plant &amp; Equipment" catalogue

**75 407 Classic tool bag**

with middle divider panel, cowhide leather, black, front panel opens out, with 8 adjustable loops, 1 pocket for small parts and 1 open pocket, middle divider panel removable, with 11 loops on front and 1 compartment with fasteners on rear, rear panel with 9 fixed loops, base tray made of sheet steel, zinc plated, key locks, handle  
Tools not included

**PARAT**

75 407 001

| Internal size<br>mm | 75 407... |  | Weight<br>g |
|---------------------|-----------|--|-------------|
| 400 x 140 x 280     | 001       |  | 3000        |

**75 409 Tool bag**

Cowhide leather combined with ABS plastic  
Tools not included

**Primat**

75 409 002

| Internal size<br>mm | 75 409... |  | Weight<br>g |
|---------------------|-----------|--|-------------|
| 400 x 150 x 250     | 002       |  | 2300        |

**Type:**

Front panel partly folds open, adjustable toolholders, fixed toolholder loops on the side panels, interior completely reinforced, bottom studs, rings for attaching strap

**75 411 Tool bag**

Cowhide leather  
Tools not included

**Primat**

75 411 001

| Internal size<br>mm | 75 411... |  | Weight<br>g |
|---------------------|-----------|--|-------------|
| 210 x 140 x 280     | 001       |  | 1300        |

**Type:**

adjustable toolholders on front and rear panel, interior reinforced, studs on bottom, shoulder strap

**75 413 Tool bag**

Cowhide leather  
Tools not included

**Primat**

75 413 001

| Internal size<br>mm | 75 413... |  | Weight<br>g |
|---------------------|-----------|--|-------------|
| 390 x 120 x 260     | 001       |  | 2000        |

**Type:**

Interior reinforced, rear panel with adjustable tool holders, 2 large front pockets, studs on bottom, rings for attaching strap, buckle straps



### 75 415 Shoulder strap

2 snap hooks, shoulder pad, adjustable



| Material | 75 415... |  |
|----------|-----------|--|
| Webbing  | 001       |  |
| Leather  | 002       |  |



75 415 ...

### 75 416 Set of rings with caps for attaching strap

made of cowhide leather, black, for subsequently attaching to leather bags



| Size mm | 75 416... |  | Weight g |
|---------|-----------|--|----------|
| 50 x 40 | 001       |  | 50       |



75 416 001

### 75 417 Tool rolls

Synthetic leather  
Tools not included



| Number of storage pockets | 75 417... |  | Size mm   | Weight g |
|---------------------------|-----------|--|-----------|----------|
| 10                        | 001       |  | 500 x 330 | 300      |
| 15                        | 002       |  | 660 x 330 | 400      |
| 20                        | 003       |  | 800 x 330 | 500      |



75 417 001

### 75 419 Tool rucksack with box for small parts

- Ergonomic tool rucksack made of lined Kordura
- Large interior compartment with pockets
- Outside pocket with zip and inner partition, small document pocket with zip
- Bottom compartment with box for small parts including rucksack belt (adjustable) and outer pocket for long parts, e.g. spirit levels
- Rucksack stands on 4 rubber feet

Tools not included



| Outer dimensions mm | 75 419... |  | Weight kg |
|---------------------|-----------|--|-----------|
| 340 x 200 x 400     | 001       |  | 1.9       |



75 419 001

### 75 420 Tool case

made of Kordura material

- Professional tool case made of EVA with strengthening structure made of polyethylene
- Document compartment
- 2 tool panels with elasticated toolholder loops; one panel can be removed
- Handle with soft, ergonomic and slip-resistant grip
- Adjustable shoulder belt

Tools not included

Colour: black



75 420 001

| Dimensions mm   | 75 420... |  | Weight kg |
|-----------------|-----------|--|-----------|
| 480 x 400 x 170 | 001       |  | 3.6       |







## Extract from the “Plant & Equipment” catalogue

### 75 418 Tool rucksack

Polytex, extremely durable

#### Type:

ergonomic handle at top, adjustable rucksack shoulder straps with mobile phone pocket, additional hip strap (adjustable) for increased comfort while carrying the rucksack, 2 side pockets of which one with Velcro fastening, side spring hook, 2 front pockets - bottom front pocket with zip for documents - with 2 large and 4 small open pockets, main compartment. Large document pocket with zip, 2 Velcro fastenings for fixing laptop or DIN A 4 folders. Large tool area (folds out) with 16 open pockets, 12 elasticated toolholder loops and pocket for small parts.

#### Tools not included

| Internal size<br>mm | 75 418... |  | Weight<br>g |
|---------------------|-----------|--|-------------|
| 420 x 350 x 210     | 010       |  | 2300        |



75 418 010

### 75 418 Small technicians' combination bag for laptop and tools

Polytex, extremely durable

#### Type:

Handle at top, adjustable strap with shoulder pad, front document pocket with zip closure.

Large compartment for laptop and documents; in total 8 large open pockets, 1 equipment compartment with Velcro fastening, 8 small open pockets

#### Tools not included

| Internal size<br>mm | 75 418... |  | Weight<br>g |
|---------------------|-----------|--|-------------|
| 390 x 300 x 100     | 015       |  | 1100        |



75 418 015

### 75 418 Large technicians' combination bag for laptop and tools

Polytex, extremely durable

#### Type:

Handle at top, adjustable strap with shoulder pad, address pocket for labelling property. Two large pockets with Velcro fastening on the side, 2 large side compartments open out by 90°

Front side compartment: Document compartment DIN A4, 17 compartments for tools and test & measuring equipment, 1 pocket for small parts

Rear side compartment: 4 large compartments, 28 elasticated loops, separate main compartment for laptop and documents, additionally divided by removable middle panel

#### Tools not included

| Internal size<br>mm | 75 418... |  | Weight<br>g |
|---------------------|-----------|--|-------------|
| 440 x 330 x 220     | 020       |  | 2600        |



75 418 020

### 75 418 Large all-purpose tool bag

Polytex, extremely durable

#### Type:

Can be completely closed with zip, handle at top.

Adjustable shoulder strap with shoulder pad, extremely robust rubber base. 9 open pockets on the outside and 8 toolholder loops. 12 open pockets on the inside

#### Tools not included

| Internal size<br>mm | 75 418... |  | Weight<br>g |
|---------------------|-----------|--|-------------|
| 440 x 320 x 230     | 025       |  | 2000        |



75 418 025

**75 418 Small all-purpose tool bag**

Polytex, extremely durable

**Type:**

Can be completely closed with zip, handle at top, adjustable strap with shoulder pad, extremely robust rubber base, 12 open pockets on the outside and 10 on the inside

Tools not included

| Internal size<br>mm | 75 418... |  | Weight<br>g |
|---------------------|-----------|--|-------------|
| 340 x 260 x 195     | 030       |  | 1500        |



75 418 030

**75 418 Multi-tool organizer**

Polytex, extremely durable

**Type:**

Handle at the top, adjustable strap with shoulder pad, inner compartment divided into 5 separate areas, additional 4 open pockets, 4 elasticated toolholder loops, 14 large open pockets on the outside, 4 small open pockets, fixing for measuring tape, spring hook strap. Separate zipped compartment in the false bottom. With additional box for small parts

Tools not included

| Internal size<br>mm | 75 418... |  | Weight<br>g |
|---------------------|-----------|--|-------------|
| 220 x 220 x 470     | 035       |  | 1400        |



75 418 035

**75 418 All-purpose tool belt**

Polytex, extremely durable

**Type:**

Individually adjustable, belt made of robust webbing, 2 side pockets with 10 small open pockets in total, 2 nail pockets, main compartments also each divided into 5 separate compartments, 2 hammer holders. Fastening for measuring tape

Tools not included

| Size       | 75 418... |  | Weight<br>g |
|------------|-----------|--|-------------|
| adjustable | 040       |  | 600         |



75 418 040

**75 418 Professional fitters' bag**

Polytex, extremely durable

**Type:**

Continuous metal rail at the top. With sponge rubber handle, bag can be completely closed with opening for carrying the bag when it is closed. Adjustable strap with shoulder pad, robust plastic slide rails. Outside: 2 large, open pockets which can be closed as well as 4 very large closable pockets, 2 large Velcro fastenings for fixing spirit level, etc. Inside: 18 small open pockets, 13 medium-sized open pockets, 5 large open pockets

Tools not included

| Internal size<br>mm | 75 418... |  | Weight<br>g |
|---------------------|-----------|--|-------------|
| 620 x 290 x 310     | 045       |  | 3100        |



75 418 045





### 75 421 Technic Line service tool portfolio

- Interior pockets for tools, CDs and disks
- Large compartment on the outside for documents and manuals
- Elasticated tapes for precision measuring equipment
- Open pocket for notepad

Tools not included



75 421 001

| Dimensions<br>mm | 75 421... |  | Weight<br>g |
|------------------|-----------|--|-------------|
| 290 x 300 x 390  | 001       |  | 995         |

### 75 422 Tool bag

for precision tools

- Padded pocket for sensitive equipment
- Two pockets with zip
- Handle, loop, belt

Tools not included



75 422 001

| Dimensions<br>mm | 75 422... |  | Weight<br>g |
|------------------|-----------|--|-------------|
| 240 x 180 x 30   | 001       |  | 700         |

### 75 424 Construction tool pouches

made of high-quality leather, riveted and/or stitched,  
First-class workmanship



...001



...002



...003



...004



...005



...006



...007



...008

| Type  | 75 424... |  |
|---|-----------|--|
| Tool pouch with 2 nail pockets and hammer loop      | 001       |  |
| Nail pouch  | 002       |  |
| Nail pouch with hammer loop                         | 003       |  |
| Large tool belt with 4 tool pouches + hammer holder | 004       |  |
| Hammer holder with metal hook                       | 005       |  |
| Drill / power screwdriver holder                    | 006       |  |
| Leather belt for waist sizes 85 - 110 mm            | 007       |  |
| Knife pouch   | 008       |  |







## Extract from the “Plant & Equipment” catalogue

### 75 425 Construction tool pouches

made of special high-strength material, with practical details, optimally comfortable to wear



...001



...002



...003



...004



...005

| Type   | 75 425... |  |
|--|-----------|--|
| Belt, black, adjustable from 90 - 120 cm   | 001       |  |
| Cordless machine pouch, reinforced material, smaller pockets for accessories                         | 002       |  |
| Tool pouch, small, snap ring for adhesive strip roll and spanners, Wide Velcro fastening, metal clip | 003       |  |
| Tool pouch, large, internal and external pockets, snap ring  | 004       |  |
| Hammer holder with metal hook  | 005       |  |

### 75 427 Tool box

open, with aluminium handle, stackable



75 427 001

| Outer dimensions<br>mm | 75 427... |  | Weight<br>g |
|------------------------|-----------|--|-------------|
| 415 x 255 x 205        | 001       |  | 500         |

### 75 429 Tool boxes

Removable tray, comfortable handle, eye for padlock

...026 Including organizer in the tray

Tools not included



75 429 020



75 429 026

| Outer dimensions<br>mm | 75 429... |  | Weight<br>g |
|------------------------|-----------|--|-------------|
| 396 x 216 x 164        | 016       |  | 800         |
| 508 x 247 x 241        | 020       |  | 1,500       |
| 654 x 278 x 280        | 026       |  | 2,900       |





## Extract from the "Plant & Equipment" catalogue

### 76 224 Tool box

**Stable design**, made of extra strong sheet steel, inside and outside with hammertone enamel, can be folded out through powerful riveted hinges, folding handle, lockable with padlock



76 224 ...

### 76 226 Tool box, extra

**1a quality**, made of sheet steel, very good workmanship, painted blue, with curved lid



75 226 ...

| Type  | External size L x B x H mm | 76 224... |  | 76 226... |   | Weight g |
|-------|----------------------------|-----------|--|-----------|---|----------|
| 3 pcs | 430 x 200 x 150            | 030       |  | -         | - | 3200     |
| 5 pcs | 430 x 200 x 200            | 050       |  | -         | - | 4200     |
| 5 pcs | 530 x 200 x 200            | 051       |  | 001       |   | 5700     |

### 76 230 Sheet steel chests

with small parts insert, robust design, made of phosphated sheet steel, splashproof and weather resistant, painted green, extra large handles, convenient to transport, lined interior, can be locked with padlock

### 76 232 Sheet steel chests

Type as **No. 70 153...**;  
however, with **rounded edges**, painted blue



Detailed view of 76 232 ...



76 230 ...

| External size L x B x H mm | Weight approx. kg | 76 230... |  | 76 232... |   |
|----------------------------|-------------------|-----------|--|-----------|---|
| 700 x 380 x 310            | 15.6              | 010       |  | -         | - |
| 830 x 430 x 350            | 20.2              | 020       |  | 020       |   |
| 910 x 530 x 430            | 28.5              | 030       |  | 030       |   |

### 76 234 Aluminium chests

Stackable with foamed lid seal, profiled, protected against dust and splashing water, lid with spring drop handles, plastic sheathed, with lever latches with drilled hole for lock and cylinder lock



76 234 ...

| Outer dimensions mm | 76 234... |  |
|---------------------|-----------|--|
| 595 x 397 x 265     | 001       |  |
| 595 x 397 x 282     | 003       |  |
| 778 x 387 x 380     | 005       |  |
| 900 x 495 x 383     | 008       |  |

**70 158 Padlocks (Series 45)**

- Different types of closing
- Lock bodies made of solid brass
- Brass pin tumbler cylinder
- Hardened steel shackles
- With 2 or 5 keys



70 158 ...

| Size<br>mm | 70 158... |  | Shackle height<br>mm | Shackle Ø<br>mm | Number of keys |
|------------|-----------|--|----------------------|-----------------|----------------|
| 30         | 001       |  | 14                   | 5               | 2              |
| 40         | 002       |  | 22                   | 6               | 2              |
| 50         | 003       |  | 25                   | 7               | 2              |
| 60         | 004       |  | 33                   | 8               | 2              |
| 40         | 005       |  | 22                   | 6               | 5              |
| 50         | 006       |  | 25                   | 8               | 5              |

**70 160 Padlocks (Series 85)**

- Different types of closing
- Lock bodies made of solid brass
- Springs and interior parts made from rustproof material
- Paracentric key profile increases protection against manipulation of the locking mechanism
- Automatic function - shackle latches into place even without the key
- Large number of really different closures
- All nickel-plated steel shackles are case hardened to protect against tampering
- Two keys per lock



70 160 ...

The Service Series 85 is also available key alike type or as a lock system!

...030 to ...060: with hardened shackles

...130 to ...160: with stainless steel shackle

| Size<br>mm | 70 160...<br>hardened shackles |  | 70 160...<br>stainless steel sh. |  | Shackle height<br>mm | Shackle Ø<br>mm | Shackle width<br>mm | Pin tumbler pairs<br>lock element |
|------------|--------------------------------|--|----------------------------------|--|----------------------|-----------------|---------------------|-----------------------------------|
| 30         | 030                            |  | 130                              |  | 17.0                 | 5               | 18.0                | 4                                 |
| 40         | 040                            |  | 140                              |  | 22.5                 | 6               | 24.0                | 5                                 |
| 50         | 050                            |  | 150                              |  | 28.0                 | 8               | 29.5                | 5                                 |
| 60         | 060                            |  | 160                              |  | 38.0                 | 10              | 35.0                | 5                                 |

...230 to ...252: with extra high shackle

| Size<br>mm | 70 160...<br>high shackle |  | Shackle height<br>mm | Shackle Ø<br>mm | Shackle width<br>mm | Pin tumbler pairs<br>lock element |
|------------|---------------------------|--|----------------------|-----------------|---------------------|-----------------------------------|
| 30         | 230                       |  | 24                   | 5               | 18.0                | 4                                 |
| 30         | 231                       |  | 65                   | 5               | 18.0                | 4                                 |
| 40         | 240                       |  | 40                   | 6               | 24.0                | 5                                 |
| 40         | 241                       |  | 63                   | 6               | 24.0                | 5                                 |
| 50         | 250                       |  | 80                   | 8               | 29.5                | 5                                 |
| 50         | 251                       |  | 127                  | 8               | 29.5                | 5                                 |
| 50         | 252                       |  | 200                  | 8               | 29.5                | 5                                 |



70 160 251 70 160 252

**70 162 Series 234 padlocks**

- stable design
- with 3 tumblers and 2 keys
- painted black
- shackle and key nickel plated



70 162 ...

| Size<br>mm | 70 162... |  | Shackle width<br>mm | Shackle height<br>mit | Shackle Ø<br>mm |
|------------|-----------|--|---------------------|-----------------------|-----------------|
| 30         | 001       |  | 15.5                | 15.5                  | 4.5             |
| 40         | 002       |  | 22.0                | 19.0                  | 6               |
| 50         | 004       |  | 28.0                | 24.5                  | 7.5             |





### 70 163 "Diskus" Series 24 padlocks

- Lock body and boltwork made of stainless steel
- including 2 cylinder keys per lock

Type:

- ...001 and ...003 Shackle made of stainless steel
- ...002 Shackle hardened



70 163 ...

| Size<br>mm | 70 163... |  | Pin pairs per lock<br>element | Shackle Ø<br>mm | Clear shackle<br>height<br>mm |
|------------|-----------|--|-------------------------------|-----------------|-------------------------------|
| 60         | 001       |  | 4                             | 8               | 13                            |
| 70         | 002       |  | 5                             | 10              | 17                            |
| 70         | 003       |  | 5                             | 10              | 17                            |

### 70 165 Premier Series 90 padlock

Strong, resistant stainless steel design with high security level

- Lock body made of stainless steel
- All components rustproof
- Double ball locking for high tensile and torsional strength
- Shackle protection makes it difficult to use bolt cutters to break open lock
- Several 1000 different closures
- Mushroom head counter pins for increased picking resistance
- Paracentric profile makes manipulation difficult
- Chrome plated brass pin cylinder
- 2 keys per lock



70 165...

| Size<br>mm | 70 165... |  | Pin pairs per<br>Lock element | Shackle Ø<br>mm | Clear shackle<br>height mm | Clear shackle<br>width mm |
|------------|-----------|--|-------------------------------|-----------------|----------------------------|---------------------------|
| 50         | 005       |  | 5                             | 9.5             | 21.5                       | 19.0                      |

### 70 164 Combination locks

The user can set their personal code No. in a very short time and change it again at any time when the lock is open. After locking the combination is reset by turning the numbers.

- Lock body made of chrome plated cast zinc
- Hardened shackle



70 164 002

70 164 003

70 164 004

| Size<br>mm | 70 164... |  | Code digits | Shackle Ø<br>mm | Shackle height<br>mm | Shackle width<br>mm |
|------------|-----------|--|-------------|-----------------|----------------------|---------------------|
| 20         | 002       |  | 3           | 3.0             | 19.5                 | 9.0                 |
| 30         | 003       |  | 3           | 5.0             | 19.5                 | 14.0                |
| 40         | 004       |  | 4           | 6.3             | 26.5                 | 19.5                |

### 70 166 Series KS square link chains

- Excellent resistance to bolt cutters due to square links made of hardened steel
- Excellent protection against corrosion due to resistant yellow zinc plating
- Very flexible, fixed textile hose with hemmed ends
- Very good tensile resistance



70 166...

| Strong<br>chain link<br>mm | 70 166... |  | Chain length<br>mm |
|----------------------------|-----------|--|--------------------|
| 6                          | 001       |  | 65                 |
| 6                          | 003       |  | 85                 |
| 8                          | 005       |  | 85                 |
| 8                          | 007       |  | 110                |
| 10                         | 009       |  | 110                |
| 10                         | 011       |  | 140                |
| 10                         | 013       |  | 170                |
| 10                         | 015       |  | 200                |





### 70 167 COBRA loop cable

- Plastic sheathed, flexible steel cable
- Suitable for securing, e.g. tool cases, construction machines, etc.



70 167 001

| Cable Ø | 70 167... |  | Cable length |
|---------|-----------|--|--------------|
| mm      |           |  | cm           |
| 8       | 001       |  | 200          |

### 70 172 Key fobs

made of soft plastic, with hole and wire S hook



70 172 010



70 172 020



70 172 030



70 172 040



70 172 050



70 172 060

| Colour | 70 172... |  |
|--------|-----------|--|
| white  | 010       |  |
| black  | 020       |  |
| red    | 030       |  |
| green  | 040       |  |
| blue   | 050       |  |
| orange | 060       |  |

The complete range is given in the  
"Plant & Equipment"  
catalogue"





## Tool trolleys



### Technical description

- Top with rubber mat and all-round edge protection "Metal Top", alternatively with beechwood board 25 mm "Beech Top"
- Tool trolley completely assembled
- Full utilisation of the clear housing height with drawers due to horizontally slidable roller shutters
- Housing made of 1.5 mm thick sheet steel
- Strengthened base panel and drawer made of 1 mm thick sheet steel result in an absolutely torsion-free design and high resistance

- All metal parts are plastic powder coated, scratchproof
- With 2 fixed and 2 swivel castors (up to 860 H 1 Fixstopp, from 890 H 2 Fixstopp)
- Depending on the model, perforated panel at the back can be lowered by means of gas springs, lockable (depth dimension +140 mm)
- Drawer inner dimensions: 565 x 431 or 282 mm
- Load capacity 35 kg
- Closed by roller shutters or central locking by means of cylinder lock

### 75 285 Tool trolleys

Paint colour: anthracite / RAL 5010 gentian blue

Drawer height: 65 / 65 / 65 / 130 mm

Size (B x D x H): 700 x 390 x 860 mm



Beech ...003

|                  |           |  |
|------------------|-----------|--|
| Top work surface | 75 285... |  |
| Metal            | 001       |  |
| Beech            | 003       |  |



...001

Closure through roller shutters

### 75 287 Tool trolleys

Paint colour: anthracite / RAL 5010 gentian blue

Drawer height: 65 / 65 / 130 / 130 / 260 mm

Size (B x D x H): 700 x 350 x 860 mm



Beech ...003

|                  |           |  |
|------------------|-----------|--|
| Top work surface | 75 287... |  |
| Metal            | 001       |  |
| Beech            | 003       |  |



...001

### 75 289 Tool trolleys

Paint colour: anthracite / RAL 5010 gentian blue

Drawer height: 65 / 65 / 130 / 130 / 260 mm

Size (B x D x H): 700 x 520 x 860 mm



Beech ...001

|                  |           |  |
|------------------|-----------|--|
| Top work surface | 75 289... |  |
| Metal            | 000       |  |
| Beech            | 001       |  |



...000







## 75 291 Tool trolleys

with practical perforated panel at the rear  
...003 + ...005 without perforated panel

Paint colour: anthracite / RAL 5010 gentian blue  
Drawer height, left-hand side: 65 / 65 / 65 / 130 / 130 mm  
right-hand side vertical perforated panel pull out  
Size (B x D x H): 1000 x 390 (with perforated panel 530) x 860 mm



Beech ...005, ...035

|                  |           |  |
|------------------|-----------|--|
| Top work surface | 75 291... |  |
| Metal            | 003       |  |
| Beech            | 005       |  |



Closure through  
roller shutters



75 291 003

## 75 293 Tool trolleys

with practical perforated panel at the rear  
...004 + ...003 without perforated panel

Paint colour: anthracite / RAL 5010 gentian blue  
Drawer height, left-hand side: 65 / 65 / 195 / 130 mm  
Drawer height, right-hand side: 65 / 195 / 195 mm  
Size (B x D x H): 1000 x 520 (with perforated panel 660) x 890 mm



Beech ...003, 005

|                  |           |  |
|------------------|-----------|--|
| Top work surface | 75 293... |  |
| Metal            | 004       |  |
| Beech            | 003       |  |



Closure through  
roller shutters



75 293 004



Extract from the "Plant & Equipment" catalogue

### 75 297 "Assistant" tool trolleys

approx. 50% more capacity than its predecessor, lid with integrated, interchangeable beech panel, middle boxes suitable for HAZET tool tidy and organisation system, with additional panel, slidable, can be integrated in the middle boxes, e.g. for callipers and small parts, spacious bottom box made of sheet steel, large wheels with improved running properties over unevenness, collapsible, all-round rubber profiles. Powder coated surface

Supplied without contents



50% more capacity

| Size<br>mm       | 75 297... |  |
|------------------|-----------|--|
| 1094 x 725 x 398 | 001       |  |



75 297 001

### 75 299 "Assistant" 166C tool trolley

collapsible, as No. 71 110...; however, with collapsible swinging down pillars to reduce to lowest, space-saving height (642 mm), the lowered pillars simultaneously serve as hand, powder coated surface



| Size<br>mm       | 75 299... |  |
|------------------|-----------|--|
| 1094 x 725 x 398 | 001       |  |



75 299 001

### 75 301 "Assistant" 173 tool trolleys

- Amazing space - double the volume of normal tool trolleys with only 20% more area required
- Loading capacity - All drawers can be pulled out 100% and loaded up to 35 kg
- Diversity - Optional solvent resistant plastic worktop or robust multiplex wooden board
- Security - Central locking of all drawers
- Innovation - Lockable side compartment for valuables or high-quality tools
- Dimensions (B x D x H): 590 x 910 x 1061 mm

Supplied without accessories

...001

With plastic worktop

...002

With Multiplex wooden board



With amazing space!



75 301 001



75 301 002

| Size<br>mm      | 75 301... |  |
|-----------------|-----------|--|
| 590x 910 x 1061 | 001       |  |
| 590x 910 x 1061 | 002       |  |



## 75 306 “Assistant” 180 tool trolleys

- Modular – with 6, 7, 8 or 9 drawers. All can be pulled out 100%. 25 kg load capacity per drawer
- Versatile – side door possible. Various optional worktops: Multiplex wooden board or metal panel with aluminium grooved look as inlay in plastic worktop. Diverse attachments. In HAZET blue or white aluminium (RAL 9006), silver also available
- Innovative – robust pillar construction with integrated anti-ram protection
- 3 stage lock concept – central locking, lockable with 2 folding keys. Individual locking of each drawer. Mutually block each other from being opened (i.e. only one at a time).
- Individual fastening options for attachments due to side and rear square hole pattern, e.g. with hooks for tools or diverse attachments such as can holders, etc.
- High-quality, large, robust ball bearing castors, Ø 125 mm
- 2 swivel castors with brake
- All tubular pillars can be used as holders for accessories, e.g. window pane holder, document holder, etc.
- Top add-on case – 50% increase in usable space. Easy to install on Assistant 180 with 4 connection bolts. 4 drawers can be pulled out 100%. Drawer load capacity 25 kg. Can hold additional tools and accessories due to square hole grids in side and rear panels



Supplied without the illustrated tools and accessories

- Tool trolley with 3 flat and 3 high drawers
- Tool trolley with 5 flat and 2 high drawers
- Tool trolley with 7 flat and 1 high drawer
- Tool trolley with 9 flat drawers



75 306...

| 75 306... |  | Size<br>mm        | Colour                            | Number of drawers |
|-----------|--|-------------------|-----------------------------------|-------------------|
| 001       |  | 1035 x 810 x 575  | HAZET blue                        | 6                 |
| 003       |  | 1035 x 810 x 575  | HAZET blue                        | 7                 |
| 005       |  | 1035 x 810 x 575  | HAZET blue                        | 8                 |
| 007       |  | 1035 x 810 x 575  | HAZET blue                        | 9                 |
| 009       |  | 459.5 x 730 x 575 | HAZET blue                        | 4                 |
| 011       |  | 1035 x 810 x 575  | White aluminium (RAL 9006 silver) | 6                 |
| 013       |  | 1035 x 810 x 575  | White aluminium (RAL 9006 silver) | 7                 |
| 015       |  | 1035 x 810 x 575  | White aluminium (RAL 9006 silver) | 8                 |
| 017       |  | 1035 x 810 x 575  | White aluminium (RAL 9006 silver) | 9                 |
| 019       |  | 459.5 x 730 x 575 | White aluminium (RAL 9006 silver) | 4                 |

## Accessories “Assistant” 180 tool trolley



...021 - ...023



...025 - ...027



...029



...031



...033



...035



...037

| Type  | 75 306...  |  |
|---|------------|--|
| <b>Door, lockable</b> incl. 2 leys for side panel, right or left-hand side<br>Colour: HAZET Blue<br>RAL 9006 (white aluminium/silver) | 021<br>023 |  |
| <b>Inserts for plastic worktop</b><br>Multiplex wooden board<br>Grooved aluminium plate   | 025<br>027 |  |
| <b>Document holder for work documents</b>   | 029        |  |
| <b>Small parts stand, plug-on, incl. magazine store for screws and other small parts</b>  | 031        |  |
| <b>Vertical perforated tool panel, attachable, for holding additional tool, incl. range of holders</b>                                | 033        |  |
| <b>Document tray, attachable, swivelling, as additional desk pad, Shelf for documents, Laptop, or similar</b>                         | 035        |  |
| <b>Tool bin, to be hung into rear and side panel</b>  | 037        |  |







## Extract from the "Plant &amp; Equipment" catalogue

**75 308 "Assistant" 178 tool trolleys**

- Robust
- Stable sheet steel construction, powder coated
- Bump protectors on all corners
- Plastic cover with compartments for small parts and labelling
- Surround prevent parts from falling
- Parallel vice 2175 N can be fixed on
- Stable push handle integrated in plastic cover
- 2 stage locking concept
- Central locking, lockable through cylinder lock with 2 folding keys
- Individual locking of drawers prevents unwanted opening of other drawers
- Additional fastening options
- Individual fastening options through square hole pattern on side panel, e.g. with hooks for tools or other attachments, e.g. can holder, paper towel holder, waste paper basket, etc.
- Side panels offset on the inside protects attachments against damage
- High loading capacity of 25 kg/ drawer
- Suitable for HAZET tool tidy and organisation system
- All drawers with smooth, easy running roller guideway
- Can be pulled out 100%
- Labelling of the drawers possible
- Drawers B 513 x D 398 mm
  - Flat drawer H 75 mm
  - High drawer H 160 mm
- High loading capacity chassis
- Large ball bearing castors (Ø 125 mm) ensure easy movement
- 2 swivel castors with brake
- All wheels with anti-dirt and anti-thread protection



75 308...

Supplied without the illustrated tools and accessories



75 308...

| Type    | 75 308... |  | Size<br>mm       | Drawers                   |
|---------|-----------|--|------------------|---------------------------|
| 178 - 6 | 001       |  | 1040 x 817 x 502 | 3 flat and 3 high drawers |
| 178 - 7 | 003       |  | 1040 x 817 x 502 | 5 flat and 2 high drawers |

**75 309 Tool trolleys**

Stable and acid-proof top with all round edge protection and rubber panel.

- All-round rubber anti-ram protection
- High degree of manoeuvrability due to 2 swivel castors and 2 fixed castors
- 1 swivel castor with direction and double stop
- Handle
- Sheet steel drawers with ball bearing supported guide tracks (drawer 40 mm high in ...001)
- Pull out and locking of the drawers on both sides
- Large bottom tray/false bottom
- Locking on both sides through steel roller shutters
- Central lock
- Total loading capacity approx. 200 kg
- Load capacity of the drawers approx. 15 kg



75 309 001

incl.

- Introductory material for the top drawer
- Storage bins
- Drawer heights:  
4 x 80 mm, 1 x 120 mm  
and 1 x 180 mm



75 309 005

| Size<br>mm      | 75 309... |  | Weight<br>kg | Quantity<br>Drawers |
|-----------------|-----------|--|--------------|---------------------|
| 720 x 400 x 920 | 001       |  | 44           | 4                   |
| 720 x 400 x 920 | 005       |  | 50           | 6                   |



## 75 308 “Assistant” 179 tool trolleys

- Robust and technically well thought through
- Stable sheet steel construction, powder coated
- Continuous vertical anti-ram protection
- Plastic cover with compartments for small parts and labelling
- Surround prevent parts from falling
- Parallel vice 2175 N can be fixed on
- Stable push handle integrated in plastic cover
- 3 stage locking concept for increased security
- Central locking, lockable through cylinder lock with 2 folding keys
- Individual locking of drawers prevents unwanted opening of other drawers
- The drawers block each other from being opened therefore reducing the risk of tilting to a minimum
- Innovative top features
- Individual fastening options through extensive, continuous square hole pattern on side panels, e.g. with hooks for tools or other attachments, e.g. can holder, paper towel holder, waste paper basket, etc.
- Side panels offset on the inside protects attachments against damage
- High loading capacity of 25 kg/ drawer
- Suitable for HAZET tool tidy and organisation system
- 1 divider / drawer included in scope of supply
- All drawers can be pulled out 100% on telescopic tracks
- Drawers B 513 x D 398 mm
  - Flat drawer H 75 mm
  - High drawer H 160 mm
- High loading capacity chassis
- Large ball bearing castors (Ø 125mm) ensure easy movement
- 2 swivel castors with brake
- All wheels with anti-dirt and anti-thread protection



75 308...

Supplied without the illustrated tools and accessories



75 308...

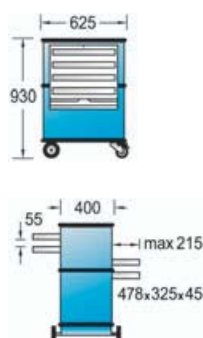
| Type    | 75 308... |  | Size<br>mm       | Drawers                   |
|---------|-----------|--|------------------|---------------------------|
| 179 - 6 | 009       |  | 1040 x 817 x 502 | 3 flat and 3 high drawers |
| 179 - 7 | 011       |  | 1040 x 817 x 502 | 5 flat and 2 high drawers |
| 179 - 8 | 013       |  | 1040 x 817 x 502 | 7 flat and 1 high drawers |
| 179 - 9 | 015       |  | 1040 x 817 x 502 | 9 flat drawers            |

# Extract from the "Plant & Equipment" catalogue



## 75 311 Tool trolleys

Sheet steel construction, four pull out drawers on both sides, all drawers can be individually subdivided. The basic fitout includes 8 lengthwise and 2 transverse dividers. Middle and end locking, large bottom compartment/false bottom, double-sided metal roller shutters secure the whole interior, central locking for padlock, particularly smooth running drawers due to ball cage guideways, absolutely exact run, large castors, lowers rolling resistance, two swivel castors, of which one with roll and rotation brake, secure stable upright trolley, **Load capacity 300 kg, Painting: blue, drawers silver coloured**

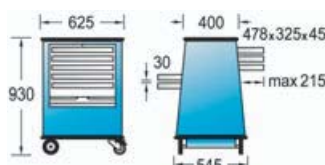


75 311 001

| Size<br>mm      | 75 311... |  |
|-----------------|-----------|--|
| 400 x 625 x 930 | 001       |  |

## 75 313 Tool trolley

with tilt-proof trapezoidal shape, five drawers can be pulled out on both sides, can be individually subdivided. The basic fitout includes 10 lengthwise and 2 transverse dividers. Middle and end locking, particularly spacious bottom compartment/false bottom, easily accessible, double-sided metal roller shutters secure the whole interior, central locking for padlock, five particularly smooth running drawers with new developed ball cage guideway, absolutely exact running, wide track chassis with large, inner-lying castors, two swivel castors, one of which with roll and rotation brake (total stop), absolutely secure and stable upright trolley, **Load capacity: 300 kg, Painting: blue, drawers silver coloured**



75 313 001

| Size<br>mm          | 75 313... |  |
|---------------------|-----------|--|
| 400/545 x 625 x 930 | 001       |  |

## 75 315 Mobile workbench

with 4 castors, the chassis with 2 large swivel castors with roll & rotation brake provides firm, stable upright position in any direction. With six large drawers, of which 5 can be individually subdivided, all now have individual locking. The basic fitout includes ten lengthwise and two transverse dividers. The drawers run precisely and easily in ball cage guideways. All drawers have individual locking. Large, freely accessible shelves for bulky parts. Strong, 11-fold glue laminated hardwood board. Static load capacity over 700 kg, mobile capacity over 300 kg. Rotary locking with hole for padlock. **GEDORIT blue, drawers GEDORIT silver.**



75 315 001

| Blade length<br>mm | 75 315... |  | Board width<br>mm | Height<br>mm |
|--------------------|-----------|--|-------------------|--------------|
| 950                | 001       |  | 550               | 875          |





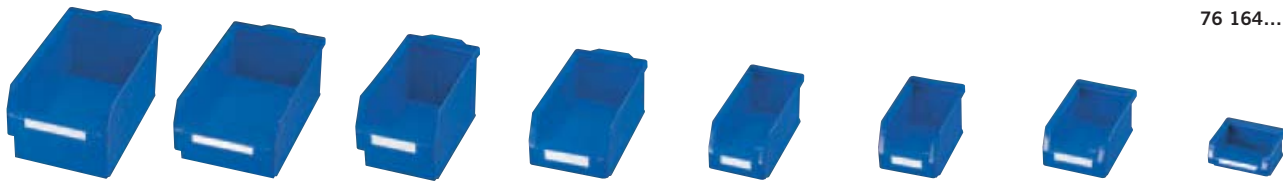
## 76 164 RasterPlan storage bins

RasterPlan storage bins, DGBM protected, are made of robust impact and breakproof polyethylene.

- 8 different bin sizes in 4 brilliant colours
- Material and design both breakproof, dimensionally stable and have high load capacity
- Safe and ergonomic handling thanks to generously dimensioned, multiple strengthened recessed grips in both narrow sides (size 1 to 4), also available with handle bar or can be retrofitted
- Specially shaped rear hanging strip, which enables absolutely horizontal hanging and suspension of the RasterPlan slotted panels (size 5 to 8) even when full, therefore no spillage of the filled material
- All-round stacking edge
- Temperature resistant from -40 to +80 °C, therefore can also be used under extreme climatic conditions
- Resistant against acids, oil and alkaline solutions
- Easy cleaning thanks to smooth inner walls, food safe
- Ribbed reinforcement on the bottom edges designed for use on conveyor and roller tracks
- Label holder with special clamping lugs which prevent the labels from slipping out
- Environmentally friendly, fully recyclable
- Optional lids are available in the "Plant & Equipment" catalogue



76 164...



| Size | Size 1             | Size 2             | Size 3             | Size 4             | Size 5             | Size 6             | Size 7            | Size 8           |
|------|--------------------|--------------------|--------------------|--------------------|--------------------|--------------------|-------------------|------------------|
|      | 500 x 300 x 250 mm | 500 x 300 x 200 mm | 350 x 200 x 200 mm | 350 x 200 x 150 mm | 290 x 140 x 130 mm | 230 x 140 x 130 mm | 160 x 105 x 75 mm | 85 x 105 x 45 mm |

| Size | L x B x H<br>mm | 76 164...<br>green | 76 164...<br>blue | 76 164...<br>red | 76 164...<br>yellow |  |
|------|-----------------|--------------------|-------------------|------------------|---------------------|--|
| 2    | 500 x 300 x 200 | 001                | 101               | 201              | 301                 |  |
| 3    | 350 x 200 x 200 | 002                | 102               | 202              | 302                 |  |
| 4    | 350 x 200 x 150 | 003                | 103               | 203              | 303                 |  |
| 5    | 290 x 140 x 130 | 005                | 105               | 205              | 305                 |  |
| 6    | 230 x 140 x 130 | 007                | 107               | 207              | 307                 |  |
| 7    | 160 x 105 x 75  | 009                | 109               | 209              | 309                 |  |
| 8    | 85 x 105 x 45   | 011                | 111               | 211              | 311                 |  |

## 76 220 ALUMINIUM chests

Ideal lightweight metal packaging



Important work documents or high-quality components – a ZARGES chest stores literally everything. Safe, clean and protected.

- High-strength, corrosion resistant aluminium alloy
- Dust and splash protected
- Stainless steel hinges
- All-round foamed in lid seal
- Latch fasteners with key locks
- Spring drop handles with plastic sheathing
- Self-supporting lid
- Very stable due to 3 fully welded profile frames



| Type   | 76 220... |  | Internal size L x B x H<br>mm | External size L x B x H<br>mm | Contents<br>l | Weight<br>kg |
|--|-----------|--|-------------------------------|-------------------------------|---------------|--------------|
| Mini chest<br>(with one handle on the front) | 001       |  | 550 x 350 x 220               | 600 x 400 x 240               | 42            | 4.0          |
| Mini chest                                   | 004       |  | 550 x 350 x 310               | 600 x 400 x 330               | 60            | 4.5          |
| Midi chest                                   | 007       |  | 750 x 350 x 310               | 800 x 400 x 330               | 81            | 5.5          |
| Maxi chest                                   | 010       |  | 850 x 450 x 350               | 900 x 500 x 370               | 135           | 6.9          |



## **“Plant & Equipment” catalogue**

-  **Plant & Equipment**
-  **Warehouse Equipment**
-  **Packaging/ Dispatch**
-  **Transport/ Conveying Equipment**
-  **Ladders/ Scaffolding**
-  **Extractor Technology**
-  **Outdoor Facilities**
-  **Environmental Protection/ Disposal**
-  **Office Equipment**



### 75 489 All-purpose cupboard

for office, warehouse and workshop, clean workmanship sheet steel construction, leaf doors with three-bolt round locking handle and 2 keys, door reinforcement in the middle, with 4 shelves, zinc coated, approx 50 kg load capacity under uniformly distributed load per shelf, Carcass and doors in RAL 7035 light grey

External size H x B x T: 1950 x 940 x 400 mm

|                     |           |  |
|---------------------|-----------|--|
| Type                | 75 489... |  |
| Zinc plated shelves | 001       |  |

#### Accessories 75 489:

### 75 789 Suitable shelves

|                  |           |  |
|------------------|-----------|--|
| Size             | 75 789... |  |
| H x B x D        |           |  |
| 1950 x 940 x 400 | 111       |  |



75 489 001

75 789 111

### 75 080 Series 705 drawer cabinet

- Housing made of quality thin sheet metal 1.75 mm thick
- Central locking via cylinder lock
- Cabinet housing with 1.5 tonne load capacity
- TÜV-GS tested
- Drawers supported on steel ball bearings
- 1 x 50, 1 x 100, 3 x 150, 1 x 300 mm
- Single pull out 88%, load 100 kg
- Drawers flush in the housing
- B x D x H: 705 x 736 x 1019 mm

Colour group 1: Housing RAL 6011, drawers RAL 6011

Colour group 2: Housing RAL 7035, drawers RAL 5012

6 drawers

**Primat**



75 080...

|              |           |  |
|--------------|-----------|--|
| Colour group | 75 080... |  |
| 1            | 010       |  |
| 2            | 013       |  |







Extract from the "Plant & Equipment" catalogue

### 75 263 CNC bench top block

- with 2 levels, incl. CNC inserts
  - Paint colour: RAL 7035 light grey
  - Size: 423 x 372 x 310 mm (B x D x H)
- incl. plastic inserts of your choice (please give details of choice in order)
- 10 x SK 40, VDI 40 or 10 x SK 30, VDI 30 or 8 x SK 50, VDI 50, HSK-A 50, HSK-A 63 or 6 x HSK-A 32, HSK-A 80, HSK-A 40, HSK-A 100, Universal Capto 4, 5, 6



including CNC inserts

RAL 7035



75 263 001

|           |  |
|-----------|--|
| 75 263... |  |
| 001       |  |

### 75 264 CNC bench top block

- with 4 levels, incl. CNC inserts
  - Paint colour: RAL 7035 light grey
  - Size: 423 x 372 x 537 mm (B x D x H)
- incl. plastic inserts of your choice (please give details of choice in order)
- 20 x SK 40, VDI 40 or 20 x SK 30, VDI 30 or 16 x SK 50, VDI 50, HSK-A 50, HSK-A 63 or 12 x HSK-A 32, HSK-A 80, HSK-A 40, HSK-A 100, Universal Capto 4, 5, 6



including CNC inserts

RAL 7035



75 264 001

|           |  |
|-----------|--|
| 75 264... |  |
| 001       |  |

### 75 272 Tall CNC cupboard

- Housing made of stable, welded sheet steel
- with plastic roller shutters
- with 4 tool frames (3 tilted; 1 straight)
- up to 200 kg load capacity for each frame
- Painted: RAL 7035 light grey
- Size: 1000 x 500 x 1950 mm (B x D x H)



including tool frames and inserts

With roller shutters

incl. plastic inserts of your choice (please give details of choice in order)

80 x SK 30, VDI 30 or  
80 x SK 40, VDI 40 or  
64 x SK 50, VDI 50, HSK-A 50, HSK-A 63 or  
52 x HSK-A 32, HSK-A 80, HSK-A 40, HSK-A 100, Universal  
Capto 4, 5, 6

RAL 7035



75 272 111

|           |  |
|-----------|--|
| 75 272... |  |
| 111       |  |

**75 280 Computing table**

- Dimensions: B 1100 x D 800 x H 1100 mm
- Solid beech worktop B 1100 x D 800 x S 25 mm with varnished surface, rounded edges and corners
- Stable and torsion free sheet steel construction
- Open shelf under the worktop, H 370 mm as well as one triple power supply incl. power cord and cable penetration in the rear of the housing
- Bottom cabinet element with 2 wing leaf doors (lockable)  
Divided into 2 compartments (170 and 330 mm)
- optionally as stationary version (with level adjustment through integrated adjustable bases) or mobile version (set of castors with 2 fixed and 2 swivel castors)
- Housing RAL7035 light grey, doors gentian blue RAL 5010  
Housing RAL7016 anthracite grey, fronts light blue RAL 5012

RAL 7035   **RAL 5010**   RAL 7016   **RAL 5012**

| Type                 | 75 280... |  |
|----------------------|-----------|--|
| Stationary 7016/5012 | 001       |  |
| Stationary 7035/5010 | 004       |  |
| Mobile 7035/5010     | 006       |  |
| Mobile 7016/5012     | 008       |  |

**75 280 Computing table**

- Dimensions B 1100 x D 800 x H 1100 mm
- Solid beech worktop B 1100 x D 800 x S 25 mm with varnished surface, rounded corners and edges as well as a cable penetration with cover plate
- Open shelf under the worktop, H 370 mm
- Bottom cabinet element with 2 wing leaf doors (lockable) as well as a triple power supply including power cable and cable penetration in the rear of the housing
- Subdivided on the left shelf height 500 mm and right 170 and 330 mm
- Bottom cabinet element with 2 wing leaf doors (lockable)  
Subdivided on the left shelf height 500 mm and right 170 and 330 mm
- optionally as stationary version (with level adjustment through integrated adjustable bases) or mobile version (set of castors with 2 fixed and 2 swivel castors)
- Housing RAL7035 light grey, doors gentian blue RAL 5010  
Housing RAL7016 anthracite grey, fronts light blue RAL 5012

RAL 7035   **RAL 5010**   RAL 7016   **RAL 5012**

| Type                 | 75 280... |  |
|----------------------|-----------|--|
| Stationary 7016/5012 | 007       |  |
| Stationary 7035/5010 | 010       |  |
| Mobile 7035/5010     | 012       |  |
| Mobile 7016/5012     | 014       |  |

**75 281 Tall computing workstation with monitor housing**

- Dimensions B 720 x D 660 x H 1850 mm
- Monitor housing (B 720 x D 550 x H 750 mm) with lockable slide in door and large viewing window. For screen size up to maximum 21". Including fan with filter mat. Under the monitor housing there is a generously dimensioned open shelf (shelf height 180 mm), as well as a roller shutter cabinet, lockable
- Optionally as stationary version (with level adjustment) or mobile version (set of castors)

RAL 7035   **RAL 5010**   RAL 7016   **RAL 5012**

| Type                 | 75 281... |  |
|----------------------|-----------|--|
| Stationary 7016/5012 | 007       |  |
| Stationary 7035/5010 | 207       |  |
| Mobile 7016/5012     | 010       |  |
| Mobile 7035/5010     | 210       |  |

with lockable roller shutters





Extract from the "Plant & Equipment" catalogue

## 76 123 Tool cabinets



Maximum organisation with minimum space requirement – the WKS multifunctional tool cabinet.

With a footprint of around one square metre only you create space for hundreds of tools. (e.g. 480 milling tools SK40 in WKS 002).

- Robust design made of powder coated steel for a long life.
- Lockable pull out storage units with label holders.
- Transport pockets for lift trucks or fork lifts for quick change of location when empty.
- **European patent!**  
Max. effective load 4,500 kg, per drawer up to 900 kg (depending on castor type, up to 1,800 kg) wheel load due to extremely stable plastic castors.
- Direct access to the tools from both sides for increased safety as it is not necessary to reach over tools.
- Individual equipping with all kinds of different brackets, holders and supports for optimum use of space on your premises



Direct access to the tools from both sides



Storage space for small items in each drawer



Maximum load capacity due to integral castors



Lift pockets for easy change of location

## Tool cabinets without fittings (without tool holders)

| Type    | Type  | Weight kg | Dimensions (B x D x H) mm | 76 123... |  |
|---------|---|-----------|---------------------------|-----------|--|
| WKS 001 | with 5 vertical drawers each 180 mm wide (5 x 900 kg load capacity)           | 450       | 1040 x 1050 x 1240        | 001       |  |
| WKS 002 | with 5 vertical drawers each 180 mm wide (5 x 900 kg load capacity)           | 550       | 1040 x 1050 x 2140        | 002       |  |
| WKS 003 | with 5 vertical drawers each 180 mm wide (5 x 900 kg load capacity)           | 450       | 1040 x 1300 x 1240        | 003       |  |
| WKS 004 | "Panzer" with 3 vertical drawers each 300 mm wide (3 x 1800 kg load capacity) | 550       | 1040 x 1050 x 2140        | 004       |  |
| WKS 005 | "Panzer" with 3 vertical drawers each 300 mm wide (3 x 1800 kg load capacity) | 550       | 1040 x 1300 x 2140        | 005       |  |
| WKS 006 | with 5 vertical pull out units each 180 mm wide (5 x 900 kg load capacity)    | 550       | 1040 x 1300 x 2140        | 006       |  |
| WKS 008 | "Panzer" with 3 vertical drawers each 300 mm wide (3 x 1800 kg load capacity) | 450       | 1040 x 1050 x 1240        | 007       |  |
| WKS 009 | "Panzer" with 3 vertical drawers each 300 mm wide (3 x 1800 kg load capacity) | 450       | 1040 x 1300 x 1240        | 008       |  |
| WKS 013 | with 3 vertical pull out units each 180 mm wide (3 x 900 kg load capacity)    | 350       | 660 x 1050 x 1240         | 009       |  |



## Tool cabinet fitout examples

### WKS001 Set Z (incl. 15 toolholders)

|              |      |            |           |
|--------------|------|------------|-----------|
| 15 x WKH 403 | each | 16 tools = | 240 tools |
| 15 x WKH 404 | each | 7 tools =  | 105 tools |

#### or mix (example)

|              |      |            |                  |
|--------------|------|------------|------------------|
| 7 x WKH 403  | each | 16 tools = | 112 tools        |
| 8 x WKH 404  | each | 7 tools =  | 56 tools         |
| <b>Total</b> |      | <b>=</b>   | <b>168 tools</b> |

### WKS002 Set Z (incl. 30 toolholders)

|              |      |            |           |
|--------------|------|------------|-----------|
| 30 x WKH 403 | each | 16 tools = | 480 tools |
| 30 x WKH 404 | each | 7 tools =  | 210 tools |

#### or mix (example)

|              |      |            |                  |
|--------------|------|------------|------------------|
| 20 x WKH 403 | each | 16 tools = | 320 tools        |
| 10 x WKH 404 | each | 7 tools =  | 70 tools         |
| <b>Total</b> |      | <b>=</b>   | <b>390 tools</b> |

### WKH403 (2 rows) and WKH406 (deep 2 rows) can be equipped with

HSK40, 50, 63  
SK30, 40  
VDI20, 25, 30, 40, 50  
CaptoC4, C5, C6  
UTS63  
ABS63, 80

### WKS003 Set Z (incl. 15 toolholders)

|              |      |            |           |
|--------------|------|------------|-----------|
| 15 x WKH 406 | each | 20 tools = | 300 tools |
| 15 x WKH 405 | each | 9 tools =  | 135 tools |

#### or mix (example)

|              |      |            |                  |
|--------------|------|------------|------------------|
| 8 x WKH 406  | each | 20 tools = | 160 tools        |
| 7 x WKH 405  | each | 9 tools =  | 63 tools         |
| <b>Total</b> |      | <b>=</b>   | <b>223 tools</b> |

### WKS006 Set Z (incl. 30 toolholders)

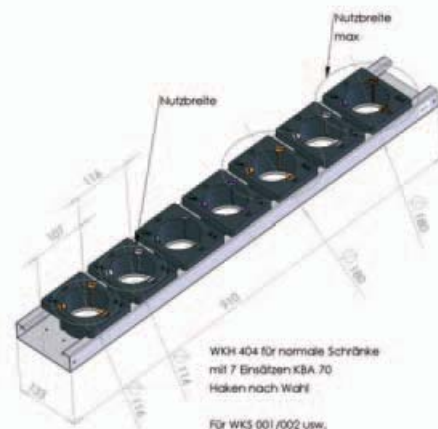
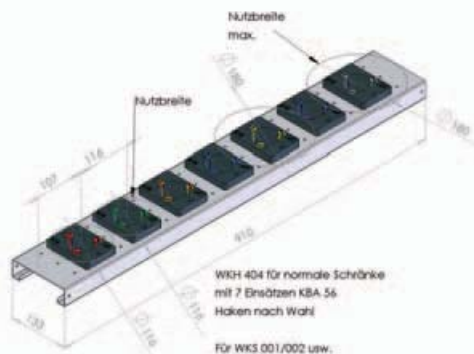
|              |      |            |           |
|--------------|------|------------|-----------|
| 30 x WKH 406 | each | 20 tools = | 600 tools |
| 30 x WKH 405 | each | 9 tools =  | 270 tools |

#### or mix (example)

|              |      |            |                  |
|--------------|------|------------|------------------|
| 20 x WKH 406 | each | 20 tools = | 400 tools        |
| 10 x WKH 405 | each | 9 tools =  | 90 tools         |
| <b>Total</b> |      | <b>=</b>   | <b>490 tools</b> |

### WKH404 (1 row) and WKH405 (deep 1 row) can be equipped with

HSK40, 50, 63, 80, 100  
SK30, 40, 50  
VDI20, 25, 30, 40, 50, 60  
CaptoC4, C5, C6, C8  
UTS63, 80  
ABS63, 80







## Extract from the "Plant & Equipment" catalogue

### 76 123 Tool cabinet sets



Apfel complete tool cabinet sets are equipped for the special requirements of metalworking firms. You therefore receive a solution matching your needs with a large storage capacity and small space requirement for a favourable set price.

#### Example: Edging/folding

| Type                 | Type   | 76 123...  |  |
|----------------------|--|------------|--|
| <b>WKS 001 SET-A</b> | Tool cabinet set for edging/folding tools with 5 drawers each 180 mm wide, 1040b x 1050d x 1240 h incl. 15 toolholders WKH 102 | <b>020</b> |  |
| <b>WKS 003 SET-A</b> | Tool cabinet set for edging/folding tools with 5 drawers each 180 mm wide, 1040b x 1300d x 1240 h incl. 15 toolholders WKH 103 | <b>025</b> |  |
| <b>WKS 013 SET-A</b> | Tool cabinet set for edging/folding tools with 3 drawers each 180 mm wide, 660b x 1050d x 1240 h incl. 9 toolholders WKH 102   | <b>030</b> |  |



#### Example: Punching/blanking

| Type                 | Type   | 76 123...  |  |
|----------------------|--|------------|--|
| <b>WKS 001 SET-S</b> | Tool cabinet set for blanking/punching tools with 5 drawers each 180 mm wide, 1040b x 1050d x 1240 h incl. 20 toolholders WKH 201 / 202 and 15 mounting plates WAB 301 - 305 | <b>035</b> |  |
| <b>WKS 002 SET-S</b> | Tool cabinet set for blanking/punching tools with 5 drawers each 180 mm wide, 1040b x 1050d x 2140 h incl. 40 toolholders WKH 201 / 202 and 30 mounting plates WAB 301 - 305 | <b>040</b> |  |
| <b>WKS 013 SET-S</b> | Tool cabinet set for blanking/punching tools with 3 drawers each 180 mm wide, 660b x 1050d x 1240 h incl. 12 toolholders WKH 201 / 202 and 9 mounting plates WAB 301 - 305   | <b>045</b> |  |



#### Example: Cutting/chip removal

| Type                 | Type   | 76 123...  |  |
|----------------------|--|------------|--|
| <b>WKS 001 SET-Z</b> | Tool cabinet set for cutting/chip removal tools with 5 drawers each 180 mm wide, 1040b x 1050d x 1240 h incl. 15 toolholders WKH 403 | <b>050</b> |  |
| <b>WKS 002 SET-Z</b> | Tool cabinet set for cutting/chip removal tools with 5 drawers each 180 mm wide, 1040b x 1050d x 2140 h incl. 30 toolholders WKH 403 | <b>055</b> |  |
| <b>WKS 003 SET-Z</b> | Tool cabinet set for cutting/chip removal tools with 5 drawers each 180 mm wide, 1040b x 1300d x 1240 h incl. 15 toolholders WKH 406 | <b>060</b> |  |
| <b>WKS 006 SET-Z</b> | Tool cabinet set for cutting/chip removal tools with 5 drawers each 180 mm wide, 1040b x 1300d x 2140 h incl. 30 toolholders WKH 406 | <b>065</b> |  |
| <b>WKS 013 SET-Z</b> | Tool cabinet set for cutting/chip removal tools with 3 drawers each 180 mm wide, 660b x 1050d x 1240 h incl. 9 toolholders WKH 403   | <b>070</b> |  |



#### Example: Very heavy tools

| Type                          | Type  | 76 123...  |  |
|-------------------------------|---|------------|--|
| <b>WKS 004 "Panzer" SET-W</b> | Tool cabinet set for very heavy tools with 3 drawers each 300 mm wide, 1040b x 1050d x 2140 h incl. 18 zinc plated tool trays WKH 901 | <b>075</b> |  |
| <b>WKS 005 "Panzer" SET-W</b> | Tool cabinet set for very heavy tools with 3 drawers each 300 mm wide, 1040b x 1300d x 2140 h incl. 18 zinc plated tool trays WKH 902 | <b>080</b> |  |
| <b>WKS 009 "Panzer" SET-W</b> | Tool cabinet set for very heavy tools with 3 drawers each 300 mm wide, 1040b x 1300d x 1240 h incl. 9 zinc plated tool trays WKH 902  | <b>085</b> |  |



Painted blue RAL 5010 (carcass) and white RAL 9002 (drawers) textured powder coated, Special paint finish available for an additional charge. The illustrated tools are not included in the price. All sizes quoted in mm.

ibemo Kazakhstan - 090301 Republic of Kazakhstan, West Kazakhstan Oblast, Aksai, Pramzone, BKKS office complex  
Phone: +7 71133 93077 ; Fax: +7 71133 93074 ; E-Mail: info@ibemo-kz.com



## Store, organise, archive - with mobile shelving

The all-purpose storage system for all working materials. Whether file racks, paint cans, storage bins or other utensils, the Apfel RSW mobile shelves stores everything and therefore introduces organised order and clarity to your firm.



### 3 mobile shelving units for a favourable set price

| Type                   | Mobile shelving set  | 76 123...  |  |
|------------------------|--|------------|--|
| <b>RSW 773 SET 001</b> | 3 x RSW 773 mobile shelving units, visible surface blue (RAL 5010), incl. 4 fixed castors each and 3 RFB 773 shelves each, 1 x end door RAT 773 white (RAL 9002), 4 x castor guide track RRF 773 in complete set, completely pre-assembled ready for use | <b>090</b> |  |
|                        | <b>Accessories</b>   |            |  |
| <b>RSW 001</b>         | Mobile shelving made of zinc plated sheet steel, visible surface blue (RAL 5010), 773 b x 1100 d x 1900 h, incl. 2 stainless steel handles and 4 fixed castors without brake   | <b>095</b> |  |
| <b>RFB 002</b>         | Zinc plated shelves, can be used as tray if turned over, approx. 730/700 b x 1058 d x 31.5 h including support angle bracket set, for hanging and optionally permanently screw-fixing  | <b>100</b> |  |
| <b>RAT 003</b>         | Two-piece end door, made of zinc coated sheet steel, white (RAL 9002) including quick closing hinges and lockable bolt   | <b>105</b> |  |
| <b>RAW 004</b>         | Bottom stainless steel tray for safe storage of containers, approx. 690 b x 1090 d x 100 h, collection volume approx. 70 litres  | <b>110</b> |  |
| <b>RRF 005</b>         | Castor guideway made of zinc plated sheet steel for installing on the floor  | <b>115</b> |  |

Also available to your size specifications or required colours (RAL colours, textured) for an additional charge.



## Extract from the "Plant & Equipment" catalogue

### 78 021 Standing step ladders

for when maximum stability is required

- 85 mm deep steps for safe standing
- Large safety platform (380 mm x 260 mm) with integrated hinge connection
- Optimum stability through rigid connection on both sides
- Two integrated bucket hooks
- Patented 7-point step - stile connection with support web in the middle of the step
- Smooth, easy grip outer stile surface
- Steps and stiles made of extruded aluminium sections



78 021...

| Number of steps including platform | 78 021... |  | Length of ladder<br>m | Platform height<br>m | bottom, outer width<br>m | Weight<br>kg |
|------------------------------------|-----------|--|-----------------------|----------------------|--------------------------|--------------|
| 4                                  | 004       |  | 1.65                  | 0.90                 | 0.47                     | 7.0          |
| 5                                  | 005       |  | 1.90                  | 1.15                 | 0.49                     | 8.0          |
| 6                                  | 006       |  | 2.10                  | 1.35                 | 0.52                     | 9.0          |
| 8                                  | 008       |  | 2.60                  | 1.75                 | 0.56                     | 13.0         |
| 10                                 | 010       |  | 3.05                  | 2.20                 | 0.61                     | 14.0         |

### 78 024 Standing step ladders

stable, comfortable and space saving

- Large platform with integrated hinge connection
- 85 mm deep step for safe standing
- 7-point step - stile connection with support web in the middle of the step
- Optimum stability through rigid connection on both sides
- Steps and stiles made of extruded aluminium sections



78 024...

| Number of steps including platform | 78 024... |  | Length of ladder<br>m | bottom, outer width<br>m | Weight<br>kg |
|------------------------------------|-----------|--|-----------------------|--------------------------|--------------|
| 2 x 2                              | 002       |  | 0.55                  | 0.43                     | 3.0          |
| 2 x 3                              | 003       |  | 0.75                  | 0.41                     | 4.5          |
| 2 x 4                              | 004       |  | 0.95                  | 0.43                     | 6.0          |
| 2 x 5                              | 005       |  | 1.20                  | 0.45                     | 7.5          |
| 2 x 6                              | 006       |  | 1.40                  | 0.47                     | 9.0          |
| 2 x 8                              | 008       |  | 1.90                  | 0.52                     | 12.0         |
| 2 x 10                             | 010       |  | 2.35                  | 0.56                     | 15.5         |

### 78 046 Leaning rung ladders

- Very lightweight and extremely stable at the same time
- Interchangeable 2-component plastic shoe for slip-proof standing and simultaneously firm fit at the stile
- Rung - stile connection through high-strength ZARGES quality beading
- Rungs and stiles made of extruded aluminium sections
- Rung depth 30 mm x 30 mm



78 046...

| Number of rungs | 78 046... |  | Length of ladder<br>m | Weight<br>kg |
|-----------------|-----------|--|-----------------------|--------------|
| 8               | 008       |  | 2.49                  | 4.4          |
| 10              | 010       |  | 3.05                  | 5.3          |
| 12              | 012       |  | 3.61                  | 6.2          |
| 14              | 014       |  | 4.17                  | 7.2          |

**78 041 Extending ladder, 2-piece**

- Particularly suitable for working at large heights
- Height adjustable conveniently and precisely from rung to rung
- Both parts of the ladder can also be used separately as leaning ladders
- Rungs and stiles made of extruded aluminium sections
- Plastic anti-slip protection and protection against lifting
- Interchangeable 2-component plastic shoe for slip-proof standing and simultaneously firm fit at the stile
- The top ladder is also fitted with ladder shoes



78 041...

| Number of rungs | 78 041... |  | Length of ladder extended<br>m | Length of ladder retracted<br>m | Weight<br>kg |
|-----------------|-----------|--|--------------------------------|---------------------------------|--------------|
| 2 x 9           | 009       |  | 4.67                           | 2.72                            | 9.3          |
| 2 x 11          | 011       |  | 5.47                           | 3.23                            | 12.3         |
| 2 x 12          | 012       |  | 6.09                           | 3.56                            | 14.2         |
| 2 x 14          | 014       |  | 7.21                           | 4.07                            | 17.4         |
| 2 x 15          | 015       |  | 7.72                           | 4.36                            | 18.6         |

**78 060 Combination ladder, 3-piece****One ladder - six functions**

- Top ladder with hooks and protection against lifting
- Opening restraint device through high-strength Perlon straps with stitched in fixing links
- Stable, screwed fittings made of extruded profiles
- Optimum connection of the guide fittings by construction surrounding the stile
- Protection against lift and guide fittings are replaceable thanks to screw fastening
- Rung - stile connection through high-strength ZARGES quality beading
- Interchangeable 2-component plastic shoe for slip-proof standing and simultaneously firm fit at the stile
- Rungs and stiles made of extruded aluminium section



78 060...

| Number of rungs | 78 060... |  | Ladder length, extended<br>(as 3-pce leaning ladder)<br>m | Length as 2-pce leaning ladder &<br>as sectional ladder<br>with push on part m | Length of the ladder parts<br>(including standing ladder<br>without push on part) m | Weight<br>kg |
|-----------------|-----------|--|---|--|---|--------------|
| 3 x 8           | 008       |  | 5.80  | 4.10   | 2.45  | 18.5         |
| 3 x 10          | 010       |  | 6.90  | 4.95   | 3.00  | 24.3         |
| 3 x 12          | 012       |  | 8.60  | 6.10   | 3.55  | 30.1         |





## Extract from the "Plant & Equipment" catalogue

### 77 662 Spur gear chain blocks



The spur gear chain block conforms to state of the art standards and the CE regulations.

#### Safety brake

The generously dimensioned disc brake always stops the load automatically and reliably during lifting and lowering. The discs are made of asbestos-free material.

#### Steel housing

The housing of the chains are made from deep shaped sheet steel, the pulley and hook holders are made from cast steel, which makes the PLM robust.

#### Rotating hooks

The suspension and load hooks are forged from heat treated quenched and tempered steel and have spring loaded, electroplated zinc coated safety flaps.

#### Rust prevention

The screws, nuts, washers and all chains are zinc plated. The other steel parts are painted in the factory "blue" colour.

| Load capacity<br>t | 77 662... |  | Hand chain<br>pulling force<br>daN | Number of<br>chain runs | Smallest<br>overall height<br>mm | Weight for<br>standard lift<br>kg |
|--------------------|-----------|--|------------------------------------|-------------------------|----------------------------------|-----------------------------------|
| 0.5                | 005       |  | 16                                 | 1                       | 280                              | 10                                |
| 1                  | 010       |  | 32                                 | 1                       | 300                              | 11                                |
| 1.5                | 015       |  | 37                                 | 1                       | 360                              | 16                                |
| 2                  | 020       |  | 33                                 | 2                       | 280                              | 20                                |
| 3                  | 030       |  | 38                                 | 2                       | 470                              | 24                                |
| 5                  | 050       |  | 42                                 | 2                       | 600                              | 38                                |
| 10                 | 100       |  | 45                                 | 4                       | 730                              | 68                                |
| 20                 | 200       |  | 53                                 | 8                       | 900                              | 150                               |



77 662...



77 670...

### 77 670 All-purpose lever hoists



Practical and easy to use lifting and lashing equipment for loads in the industrial sector. Position in the middle without load using freewheel selection. Screws, nuts, bolts and the middle part are zinc plated. The lever hoist has a galvanised, quenched and hardened hoisting chain in accordance with DIN 5684 at 80 degrees with 1.5 m length. Additional lift if required at any length! Supplied with test certificate and overload test!

| Load capacity<br>t | 77 670... |  | Standard lift<br>m | Chain size<br>mm | Number of chain<br>runs | Leverage<br>daN | Weight for<br>standard lift<br>kg |
|--------------------|-----------|--|--------------------|------------------|-------------------------|-----------------|-----------------------------------|
| 0.75               | 007       |  | 1.5                | 6 x 18           | 1                       | 21              | 6.5                               |
| 1.5                | 015       |  | 1.5                | 8 x 24           | 1                       | 24              | 10.5                              |
| 3                  | 030       |  | 1.5                | 10 x 30          | 1                       | 32              | 17.6                              |
| 6                  | 060       |  | 1.5                | 10 x 30          | 2                       | 34              | 25.5                              |



## The whole world of lifting technology

Lifting - Pulling - Securing/Lashing - Transporting

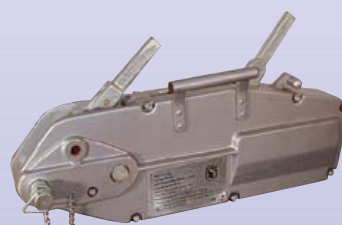
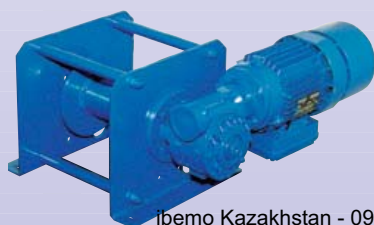
- Electric chain hoists
- Pneumatic chain hoists
- Cable winches
- Hand winches
- Manual lifting gear
- Cranes + crane systems
- Cable hoists



- Hose reelers
- Spring hoists
- Lifting tackle
- Pallet trucks
- Chains, belts, ropes & cables
- Inspections + installation
- ISO 9001 certified



PLANETA Hebetchnik GmbH





### 77 672 Bravo lever hoist



The Bravo chain lever hoists are practical helpers for lifting, pulling and lashing loads. The closed housing protects the drive and brake against dirt. The load brake automatically and reliably holds the load during lifting and lowering. The brake discs are made of asbestos-free material. Hoisting chain made of high-strength, zinc plated coil chain according to DIN 5684, standard type for 1.5 m normal lift



77 672...

| Load capacity<br>kg | 77 672... |  | Hoisting chain<br>Nominal thick-<br>ness/chain pitch | Quality class | Weight with<br>chain<br>kg |
|---------------------|-----------|--|--|---------------|----------------------------|
| 250                 | 060       |  | 4 x 12   | 8             | 2                          |
| 500                 | 062       |  | 5 x 15   | 5             | 5                          |

### 77 703 Compact Jockey cable hoists



Compact and lightweight cable hoists for use in industry, construction and trades ready to use in any position with the same cable length

**The basic equipment includes:**

Jockey device with lever tube

10 m cable

2 straps 1 or 2 m long



77 703...

| Type | 77 703... |  | Service load<br>daN | Cable feed per<br>double stroke<br>mm | Weight<br>kg | Dimensions<br>L x B x H<br>cm | Cable Ø<br>mm |
|------|-----------|--|---------------------|---------------------------------------|--------------|-------------------------------|---------------|
| A5   | 090       |  | 300                 | 15                                    | 2            | 32 x 19 x 3                   | 4.5           |
| J5   | 092       |  | 500                 | 14.5                                  | 3.75         | 37 x 21.5 x 5.5               | 6.5           |

### Accessories for Jockey A5

- **Additional B 10 equipment for doubling the load capacity to 0.6 t consisting of:**  
Idler pulley, strap 1 m long, 10 mm diameter (for fixing the roll) 20 m cable, 4.5 mm diameter
- **Ground anchor for cable hoist**
- **Anchor clamp with shackle**

Prices on request



## Extract from the "Plant &amp; Equipment" catalogue

**77 703 Minifor electric cable hoist**

The portable cable hoist for lifting and pulling with virtually unlimited cable lengths

- Cable diameter 6.5 mm
- Compact design
- Constant speed, constant tensile force
- Precise cable pulling in without deflection
- Favourable performance - weight ratio
- Ergonomic handle
- Adjustable hoisting limited and cable runout lock
- incl. 2.5 m control cable, 10m cable on reel, hook and 2 limit switch springs



77 703...

| Type           | 77 703... |  | max hoisting force | Speed | Voltage | Power | Weight |
|----------------|-----------|--|--------------------|-------|---------|-------|--------|
| kg             |           |  | kg                 | m/min | V       | kW    | kg     |
| Minifor TR 11  | 040       |  | 100                | 15    | 230     | 0.37  | 21.0   |
| Minifor TR 31  | 042       |  | 300                | 5     | 230     | 0.37  | 21.0   |
| Minifor TR 30S | 044       |  | 300                | 12    | 230     | 1.1   | 31.6   |
| Minifor TR 30S | 046       |  | 300                | 12    | 230     | 1.1   | 31.6   |
| Minifor TR 50  | 048       |  | 500                | 7     | 230     | 1.1   | 31.6   |
| Minifor TR 50  | 050       |  | 500                | 7     | 230     | 1.1   | 31.6   |

**77 703 Minifor cables**

high-quality cables with tip, hook and 1 spring with setting ring for shut-off mechanism

- Cable diameter 6.5 mm

| Cable length | 77 703... |  |
|--------------|-----------|--|
| m            |           |  |
| 10           | 060       |  |
| 20           | 062       |  |
| 30           | 064       |  |
| 40           | 066       |  |
| 50           | 068       |  |
| 100          | 070       |  |



77 703...

**77 622 Slings**

DIN EN 1492-1 made of polyester (PES), two-layer, with stitched in reinforced loops.

Other load capacities and lengths available on request



77 622...

| Load capacity | Colour | 77 622... |  | Belt width       | Loop length | Loop width | Length |
|---------------|--------|-----------|--|------------------|-------------|------------|--------|
| kg            |        |           |  | x - Thickness mm | mm          | mm         | mm     |
| 1000          | violet | 120       |  | 30 x 7           | 200         | 15         | 2      |
| 2000          | green  | 220       |  | 60 x 7           | 300         | 30         | 2      |
| 3000          | yellow | 320       |  | 90 x 7           | 350         | 30         | 2      |
| 4000          | grey   | 420       |  | 120 x 7          | 425         | 40         | 2      |
| 1000          | violet | 130       |  | 30 x 7           | 200         | 15         | 3      |
| 2000          | green  | 230       |  | 60 x 7           | 300         | 30         | 3      |
| 3000          | yellow | 330       |  | 90 x 7           | 350         | 30         | 3      |
| 4000          | grey   | 430       |  | 120 x 7          | 425         | 40         | 3      |
| 5000          | red    | 530       |  | 150 x 7          | 500         | 50         | 3      |
| 1000          | violet | 140       |  | 30 x 7           | 200         | 15         | 4      |
| 2000          | green  | 240       |  | 60 x 7           | 300         | 30         | 4      |
| 3000          | yellow | 340       |  | 90 x 7           | 350         | 30         | 4      |
| 4000          | grey   | 440       |  | 120 x 7          | 425         | 40         | 4      |
| 5000          | red    | 540       |  | 150 x 7          | 500         | 50         | 4      |

| Load capacity | Colour | 77 622... |  | Belt width       | Loop length | Loop width | Length |
|---------------|--------|-----------|--|------------------|-------------|------------|--------|
| kg            |        |           |  | x - Thickness mm | mm          | mm         | mm     |
| 1000          | violet | 150       |  | 30 x 7           | 200         | 15         | 5      |
| 2000          | green  | 250       |  | 60 x 7           | 300         | 30         | 5      |
| 3000          | yellow | 350       |  | 90 x 7           | 350         | 30         | 5      |
| 4000          | grey   | 450       |  | 120 x 7          | 425         | 40         | 5      |
| 5000          | red    | 550       |  | 150 x 7          | 500         | 50         | 5      |
| 1000          | violet | 160       |  | 30 x 7           | 200         | 15         | 6      |
| 2000          | green  | 260       |  | 60 x 7           | 300         | 30         | 6      |
| 3000          | yellow | 360       |  | 90 x 7           | 350         | 30         | 6      |
| 4000          | grey   | 460       |  | 120 x 7          | 425         | 40         | 6      |
| 5000          | red    | 560       |  | 150 x 7          | 500         | 50         | 6      |
| 1000          | violet | 180       |  | 30 x 7           | 200         | 15         | 8      |
| 2000          | green  | 280       |  | 60 x 7           | 300         | 30         | 8      |
| 3000          | yellow | 380       |  | 90 x 7           | 350         | 30         | 8      |
| 4000          | grey   | 480       |  | 120 x 7          | 425         | 40         | 8      |
| 5000          | red    | 580       |  | 150 x 7          | 500         | 50         | 8      |



## 77 620 Roundslings

1000 - 5000 kg, made of polyester (PES) according to DIN 1492-1, double sheath, colour coded, printed on load capacity details, woven in load capacity strips.

Other load capacities and lengths available on request



77 620...

| Load capacity kg | 77 620... |  | Colour | Working length m |
|------------------|-----------|--|--------|------------------|
| 1000             | 105       |  | violet | 0.5              |
| 2000             | 205       |  | green  | 0.5              |
| 1000             | 110       |  | violet | 1                |
| 2000             | 210       |  | green  | 1                |
| 3000             | 310       |  | yellow | 1                |
| 4000             | 410       |  | grey   | 1                |
| 5000             | 510       |  | red    | 1                |
| 1000             | 115       |  | violet | 1.5              |
| 2000             | 215       |  | green  | 1.5              |
| 3000             | 315       |  | yellow | 1.5              |
| 4000             | 415       |  | grey   | 1.5              |
| 5000             | 515       |  | red    | 1.5              |
| 1000             | 120       |  | violet | 2                |
| 2000             | 220       |  | green  | 2                |
| 3000             | 320       |  | yellow | 2                |
| 4000             | 420       |  | grey   | 2                |
| 5000             | 520       |  | red    | 2                |
| 1000             | 125       |  | violet | 2.5              |
| 2000             | 225       |  | green  | 2.5              |
| 3000             | 325       |  | yellow | 2.5              |
| 4000             | 425       |  | grey   | 2.5              |
| 5000             | 525       |  | red    | 2.5              |

| Load capacity kg | 77 620... |  | Colour | Working length m |
|------------------|-----------|--|--------|------------------|
| 1000             | 130       |  | violet | 3                |
| 2000             | 230       |  | green  | 3                |
| 3000             | 330       |  | yellow | 3                |
| 4000             | 430       |  | grey   | 3                |
| 5000             | 530       |  | red    | 3                |
| 1000             | 140       |  | violet | 4                |
| 2000             | 240       |  | green  | 4                |
| 3000             | 340       |  | yellow | 4                |
| 4000             | 440       |  | grey   | 4                |
| 5000             | 540       |  | red    | 4                |
| 1000             | 150       |  | violet | 5                |
| 2000             | 250       |  | green  | 5                |
| 3000             | 350       |  | yellow | 5                |
| 4000             | 450       |  | grey   | 5                |
| 5000             | 550       |  | red    | 5                |
| 1000             | 160       |  | violet | 6                |
| 2000             | 260       |  | green  | 6                |
| 3000             | 360       |  | yellow | 6                |
| 4000             | 460       |  | grey   | 6                |
| 5000             | 560       |  | red    | 6                |

## 77 640 Tie down straps

made of polyester (PES) according to DIN EN 12195-2 and VDI 2701, with pressure ratchet

| Tensile force daN | 77 640... |  | Length / fixed end m | Length m | Strap width mm | Type         |
|-------------------|-----------|--|----------------------|----------|----------------|--------------|
| 250 / 500         | 104       |  | 0.3                  | 4        | 25             | one piece    |
| 250 / 500         | 106       |  | 0.3                  | 6        | 25             | one piece    |
| 500 / 1000        | 204       |  | 0.3                  | 4        | 25             | one piece    |
| 500 / 1000        | 206       |  | 0.3                  | 6        | 25             | one piece    |
| 1000 / 2000       | 306       |  | 0.5                  | 6        | 35             | one piece    |
| 1000 / 2000       | 308       |  | 0.5                  | 8        | 35             | one piece    |
| 2000 / 4000       | 408       |  | 0.5                  | 8        | 50             | one piece    |
| 2000 / 4000       | 410       |  | 0.5                  | 10       | 50             | one piece    |
| 2500 / 5000       | 508       |  | 0.5                  | 8        | 50             | one piece    |
| 2500 / 5000       | 510       |  | 0.5                  | 10       | 50             | one piece    |
| 1000 / 2000       | 316       |  | 0.5                  | 6        | 35             | Frame hook   |
| 1000 / 2000       | 318       |  | 0.5                  | 8        | 35             | Frame hook   |
| 2000 / 4000       | 418       |  | 0.5                  | 8        | 50             | Frame hook   |
| 2000 / 4000       | 420       |  | 0.5                  | 10       | 50             | Frame hook   |
| 2500 / 5000       | 518       |  | 0.5                  | 8        | 50             | Frame hook   |
| 2500 / 5000       | 520       |  | 0.5                  | 10       | 50             | Frame hook   |
| 250 / 500         | 124       |  | 0.3                  | 4        | 25             | Pointed hook |
| 250 / 500         | 126       |  | 0.3                  | 6        | 25             | Pointed hook |
| 500 / 1000        | 224       |  | 0.3                  | 4        | 25             | Pointed hook |
| 500 / 1000        | 226       |  | 0.3                  | 6        | 25             | Pointed hook |
| 1000 / 2000       | 326       |  | 0.5                  | 6        | 35             | Pointed hook |
| 1000 / 2000       | 328       |  | 0.5                  | 8        | 35             | Pointed hook |
| 2000 / 4000       | 428       |  | 0.5                  | 8        | 50             | Pointed hook |
| 2000 / 4000       | 430       |  | 0.5                  | 10       | 50             | Pointed hook |
| 2500 / 5000       | 528       |  | 0.5                  | 8        | 50             | Pointed hook |
| 2500 / 5000       | 530       |  | 0.5                  | 10       | 50             | Pointed hook |



77 640...





## **“Plant & Equipment” catalogue**

- ➔ **Plant & Equipment**
- ➔ **Warehouse Equipment**
- ➔ **Packaging/Dispatch**
- ➔ **Transport/Conveying Equipment**
- ➔ **Ladders/Scaffolding**
- ➔ **Extractor Technology**
- ➔ **Outdoor Facilities**
- ➔ **Environmental Protection/Disposal**
- ➔ **Office Equipment**



## 77 300 Hand pallet trucks

for professional transport of palletized goods under demanding conditions.

- Safety drawbar with the functions:  
Lift - Move - Lower,
- Precisely measured lowering speed,
- Low maintenance hydraulics with hard chrome plated piston and overload protection,
- Maintenance free deep-groove ball bearings (2 RS)

Special length forks 800, 950, 1500, 1800 or 2000 mm long available on request



77 300...

| Load capacity<br>t | 77 300... |  | Fork length<br>mm | Tyres            |
|--------------------|-----------|--|-------------------|------------------|
| 2,5                | 012       |  | 1150              | PUR / PA Tandem+ |
| 3.0                | 013       |  | 1150              | PUR / PA Tandem  |

## 77 210 Swan neck trolleys

made from welded tubular steel, powder coated, RAL 5007 blue, with wooden platform, screw on handle, 2 swivel and 2 fixed castors, solid rubber tyres, wheel hubs with roller bearings, wheel size 125 x 38 mm



...010

...020

| Loading area<br>L x B x H<br>mm | 77 210... |  | Load capacity<br>kg |
|---------------------------------|-----------|--|---------------------|
| 600 x 500 x 185                 | 010       |  | 250                 |
| 600 x 450 x 185/765             | 020       |  | 200                 |





Extract from the "Plant & Equipment" catalogue

### 77 212 Low loading trolleys



made of welded tubular steel, powder coated, RAL 5007 blue, permanently surface protected, shock and scratch proof, interchangeable decks, push in and screw principle, wood-based material platforms, 2 swivel and 2 fixed castors, solid rubber tyres, hubs with roller bearings. Equipped with wheel locks on the swivel castors in accordance with EN 1757-3



77 212...

| Load area<br>Length x width<br>mm | 77 212... |  | Load capacity<br>kg | Wheel Ø<br>mm | Self weight<br>kg |
|-----------------------------------|-----------|--|---------------------|---------------|-------------------|
| 850 x 450                         | 001       |  | 200                 | 125           | 15                |
| 1000 x 600                        | 002       |  | 200                 | 125           | 20                |

### 77 226 Tubular steel sack trucks



Handy tubular steel sack trucks with sheet steel toe plates, stable welded construction, powder coated, RAL 5007 blue. Safety handle grips, wheels optionally with solid rubber or pneumatic tyres on plastic rims, hubs with roller bearings



...010 - ...011



...020 - ...021



...030 - ...031

| Load capacity<br>kg | 77 226... |  | Height<br>mm | Total width<br>mm | Toe plate<br>width<br>B x L | Tyres        |
|---------------------|-----------|--|--------------|-------------------|-----------------------------|--------------|
| 200                 | 010       |  | 1150         | 570               | 320 x 250                   | Solid rubber |
| 200                 | 011       |  | 1150         | 570               | 320 x 250                   | Pneumatic    |
| 250                 | 020       |  | 1150         | 620               | 400 x 150                   | Solid rubber |
| 250                 | 021       |  | 1150         | 620               | 400 x 150                   | Pneumatic    |
| 300                 | 030       |  | 1300         | 580               | 320 x 250                   | Solid rubber |
| 300                 | 031       |  | 1300         | 580               | 320 x 250                   | Pneumatic    |



### 74 174 Wheelbarrow

Stackable, welded frame with sheet steel pan, 34 mm Ø tubular steel, 1.5 mm thick, zinc plated steel pan 85 litre capacity with all round wire inlay, plastic handles, with plastic plain bearings, completely assembled.



74 174...

| Tyres                          | 74 174... |  | Wheel size mm |
|--------------------------------|-----------|--|---------------|
| Pneumatic                      | 001       |  | 400 x 100     |
| Solid rubber                   | 002       |  | 390 x 80      |
| Replacement pneumatic wheel    | 003       |  | 400 x 100     |
| Replacement solid rubber wheel | 004       |  | 390 x 80      |

### 74 175 Professional deep pan wheelbarrow

Pan carrying tubular steel frame with pre-bent tilt handles, tubular steel 34 mm Ø, wall thickness 1.5 mm, legs welded on against each other with leg strengthening, zinc plated, narrow deep pan 100 litre, sheet metal thickness 1.00 mm, with profiled beaded edge, front pan support/stays, wooden handles comfortable to hold, completely assembled.

For suitable replacement wheels, please refer to 74 174 003 and 004



74 175...

| Tyres        | 74 175... |  | Wheel size mm |
|--------------|-----------|--|---------------|
| Pneumatic    | 001       |  | 400 x 100     |
| Solid rubber | 002       |  | 390 x 80      |





## Extract from the "Plant & Equipment" catalogue

### Series 1000 workbenches **Primat**

- **Worktop**  
Beech Multiplex 40 mm - glue laminated beech veneers.  
Top and edges treated with vegetable oil, all edges machined, front edge with radius.
- **Base/housing**  
Complete frame (welded construction) with integrated building in housings.
- **Drawers**  
With integrated handle rail, 4-fold ball bearing supported drawers  
Internal size B490 x D560 mm. Supported on ball bearings on smooth running castors (quiet running). Self-closing and pull out lock. Load capacity 75 kg - pull out 90 %.

- **Wing leaf doors**  
With integrated handle rail, door heights 360 mm and 540 mm, self-closing. Internal size of compartment: B560 x D620 mm
- **Central lock**  
Two keys for each lock - key alike
- **Standard painting**  
Environmentally friendly powder coating
- Housing RAL 7035 (light grey) / fronts RAL 5012 (light blue)
- Housing RAL 7016 (anthracite grey) / fronts RAL 5012 (light blue)
- Housing RAL 6011 (reseda green) / fronts RAL 6011 (reseda green)
- **Delivery**  
Completely assembled

#### 75 020 Workbench

1 drawer 180 mm, 1 door 360 mm  
1 shelf in open element, 1 shelf behind door

| B x D x H<br>mm  | 75 020... |  | Paint colour:   |
|------------------|-----------|--|-----------------|
| 1500 x 700 x 850 | 002       |  | RAL 7035 / 5012 |
| 1500 x 700 x 850 | 003       |  | RAL 7016 / 5012 |
| 1500 x 700 x 850 | 004       |  | RAL 6011 / 6011 |



75 020...

#### 75 022 Workbench

3 drawers 180 mm  
1 shelf in open element, 1 shelf behind door

| B x D x H<br>mm  | 75 022... |  | Paint colour:   |
|------------------|-----------|--|-----------------|
| 1500 x 700 x 850 | 002       |  | RAL 6011 / 6011 |
| 1500 x 700 x 850 | 003       |  | RAL 7016 / 5012 |
| 1500 x 700 x 850 | 004       |  | RAL 7035 / 5012 |



75 022...

#### 75 022 Workbench

2 drawers 180 mm, 2 doors 360 mm

| B x D x H<br>mm  | 75 022... |  | Paint colour:   |
|------------------|-----------|--|-----------------|
| 1500 x 700 x 850 | 005       |  | RAL 7035 / 5012 |
| 1500 x 700 x 850 | 006       |  | RAL 7016 / 5012 |
| 1500 x 700 x 850 | 007       |  | RAL 6011 / 6011 |



75 022...

#### 75 026 Workbench

3 drawers 180 mm, 1 door 540 mm, 1 shelf behind door

| B x D x H<br>mm  | 75 026... |  | Paint colour:   |
|------------------|-----------|--|-----------------|
| 1500 x 700 x 850 | 002       |  | RAL 7035 / 5012 |
| 1500 x 700 x 850 | 003       |  | RAL 7016 / 5012 |
| 1500 x 700 x 850 | 004       |  | RAL 6011 / 6011 |



75 026...



## Series 1000 workbenches **Primat**

### 75 024 Workbench

2 drawers 180 mm, 2 doors 360 mm  
1 shelf in open element, 1 shelf behind door

| B x D x H<br>mm  | 75 024... |  | Paint colour:   |
|------------------|-----------|--|-----------------|
| 2000 x 700 x 850 | 002       |  | RAL 7035 / 5012 |
| 2000 x 700 x 850 | 003       |  | RAL 7016 / 5012 |
| 2000 x 700 x 850 | 004       |  | RAL 6011 / 6011 |



75 024...

### 75 026 Workbench

3 drawers 180 mm, 1 door 540 mm  
1 shelf in open element, 1 shelf behind door

| B x D x H<br>mm  | 75 026... |  | Paint colour:   |
|------------------|-----------|--|-----------------|
| 2000 x 700 x 850 | 005       |  | RAL 7035 / 5012 |
| 2000 x 700 x 850 | 006       |  | RAL 7016 / 5012 |
| 2000 x 700 x 850 | 007       |  | RAL 6011 / 6011 |



75 026...

### 75 028 Workbench

3 drawers 180 mm, 2 doors 360 mm

| B x D x H<br>mm  | 75 028... |  | Paint colour:   |
|------------------|-----------|--|-----------------|
| 2000 x 700 x 850 | 001       |  | RAL 7035 / 5012 |
| 2000 x 700 x 850 | 002       |  | RAL 7016 / 5012 |
| 2000 x 700 x 850 | 003       |  | RAL 6011 / 6011 |



75 028...

### 75 029 Workbench

3 drawers 180 mm, 2 doors 540 mm, 2 shelves behind doors

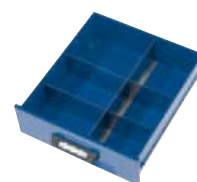
| B x D x H<br>mm  | 75 029... |  | Paint colour:   |
|------------------|-----------|--|-----------------|
| 2000 x 700 x 850 | 001       |  | RAL 7035 / 5012 |
| 2000 x 700 x 850 | 002       |  | RAL 7016 / 5012 |
| 2000 x 700 x 850 | 003       |  | RAL 6011 / 6011 |



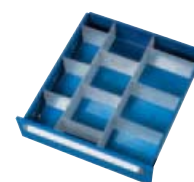
75 029...

### 75 228 Range of dividers

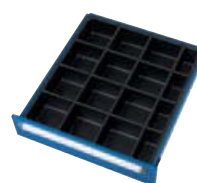
| Range  | 75 228... |  | Drawer height<br>mm |
|--|-----------|--|---------------------|
| <b>1/4</b><br>1 divider<br>4 movable transverse partitions                                   | 003       |  | 180                 |
| <b>KTE 16</b><br>1 insert with<br>16 compartments<br>(Height 100 mm)                         | 013       |  | 180                 |
| <b>2/9</b><br>2 partitions<br>9 movable transverse partitions                                | 019       |  | 180                 |
| <b>ARM</b><br>Anti-slip mat<br>(can also be used in<br>conjunction with<br>the other ranges) | 021       |  | 180                 |



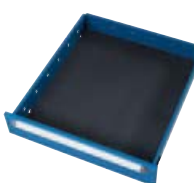
...003



...013



...019



...021

